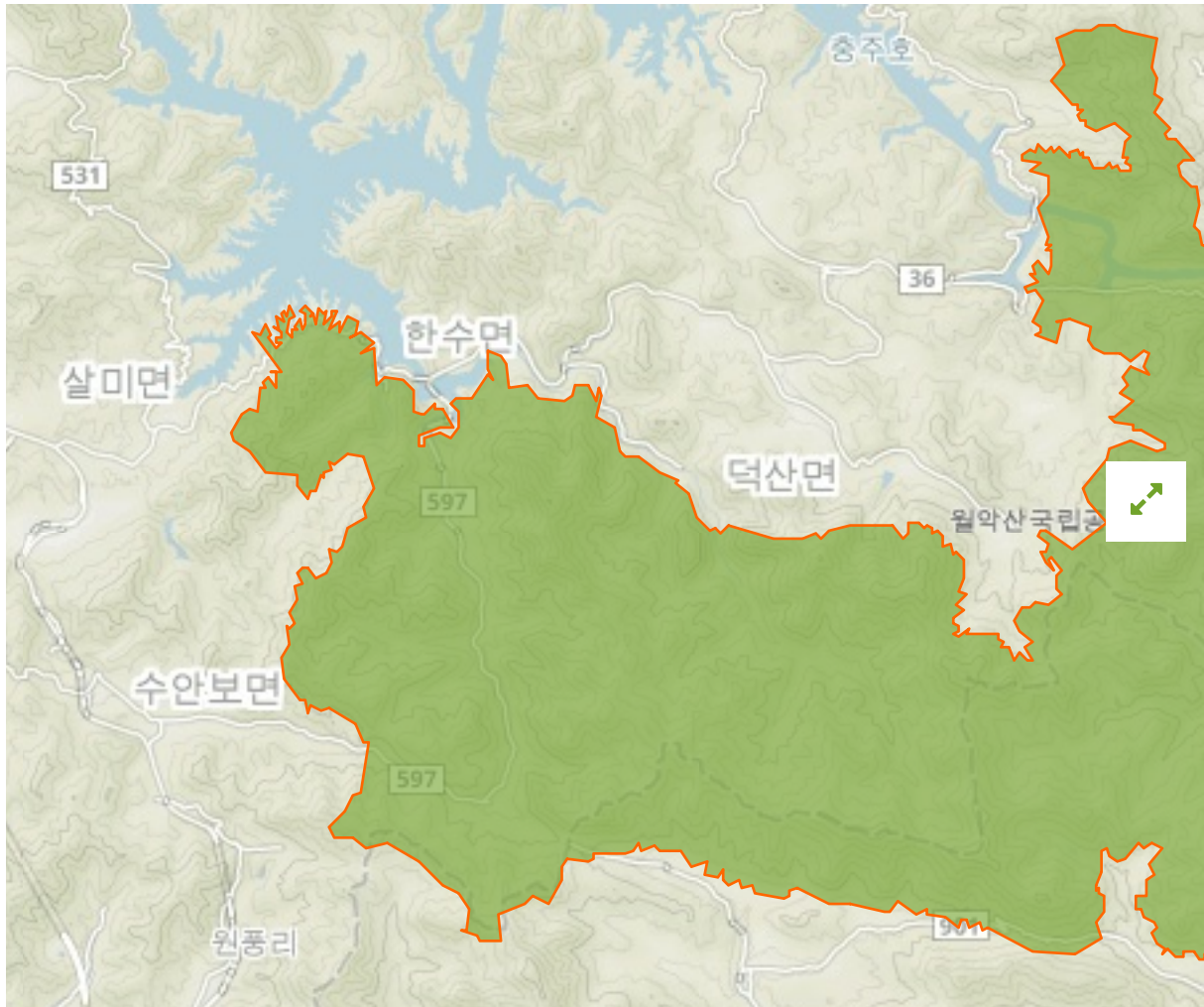


## Woraksan in Republic Of Korea



The designations employed and the presentation of material on this map do not imply the expression of any opinion whatsoever on the part of the Secretariat of the United Nations concerning the legal status of any country, territory, city or area or of its authorities, or concerning the delimitation of its frontiers or boundaries.

WDPA ID

**10934**

Reported Area

**287.57 km<sup>2</sup>**

## Data Provider

---

Ministry of Environment, Korea National Park Service and Korea Protected Areas Forum on behalf of Ministry of Oceans and Fisheries, Cultural Heritage Administration, Korea Forest Service & MAB National Committee of the Republic of Korea

## Management Effectiveness Evaluations

---

Korea SOP 2016

## Attributes

---

### Original Name

English Designation

**National Park**

IUCN Management Category

**II**

Status

Designated

Type of Designation

National

Status Year

1984

Sublocation

KR-43, KR-47

Governance Type

Federal or national ministry or agency

Management Authority

Korea National Park Service

Management Plan

Annual management plan, long term (10 years) management direction

International Criteria

Not Applicable