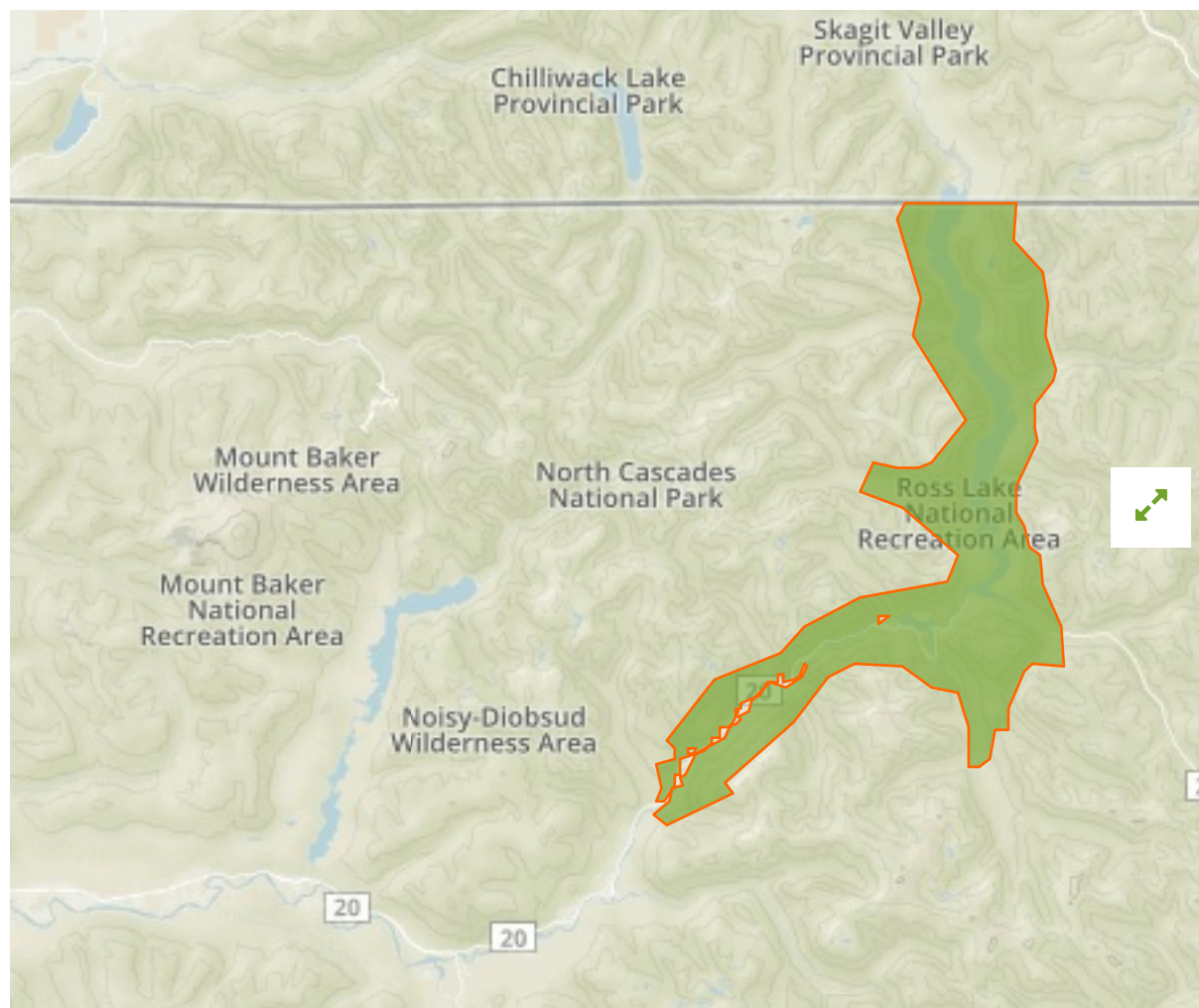


Ross Lake in United States of America



The designations employed and the presentation of material on this map do not imply the expression of any opinion whatsoever on the part of the Secretariat of the United Nations concerning the legal status of any country, territory, city or area or of its authorities, or concerning the delimitation of its frontiers or boundaries.

WDPA ID

11111521

Reported Area

460.07 km²

i Data Provider

US Geological Survey, Gap Analysis Program (GAP), National Operations Office, Boise State University

Management Effectiveness Evaluations

No information available

Attributes

Original Name	Ross Lake
English Designation	National Recreation Area
IUCN Management Category	V
Status	Designated
Type of Designation	National
Status Year	Not Reported
Sublocation	US-WA
Governance Type	Federal or national ministry or agency
Management Authority	National Park Service
Management Plan	Not Reported
International Criteria	Not Applicable

Site network breakdown

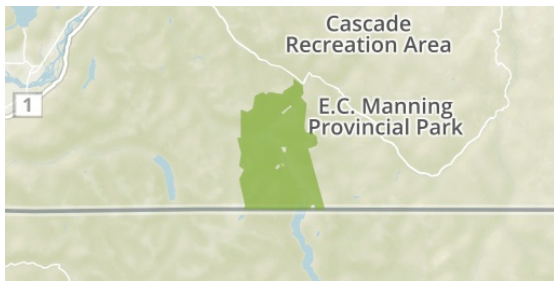
Transboundary sites

Skagit Valley Park

in Canada

Ross Lake Ecological Reserve

in Canada



English Designation

A - Park

IUCN Category

II

WDPA ID Year of Designation

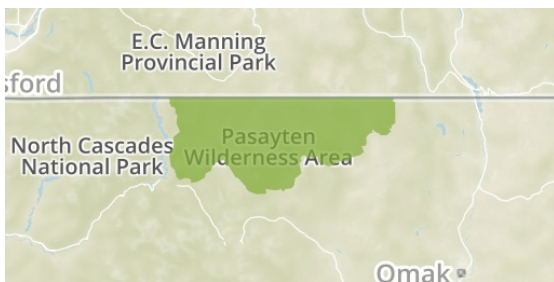
101678

Reported Area

279.5 km²

Pasayten

in United States of America



English Designation

Wilderness

IUCN Category

Ib

WDPA ID Year of Designation

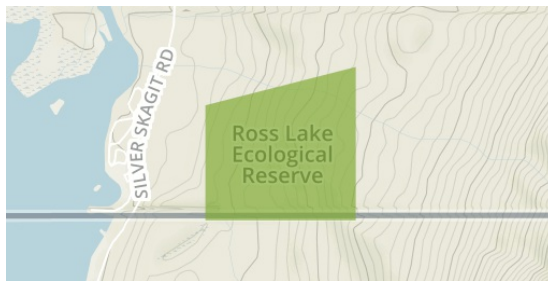
372957

Reported Area

2150.4 km²

E.C. Manning Park

in Canada



English Designation

Ecological Reserve

IUCN Category

Ia

WDPA ID Year of Designation

18404

Reported Area

0.6 km²

Stephen Mather

in United States of America



English Designation

Wilderness

IUCN Category

Ib

WDPA ID Year of Designation

555586266

Reported Area

2579.7 km²

North Cascades

in United States of America



English Designation

A - Park

IUCN Category

II

WDPA ID Year of Designation

65177

Reported Area

836.7 km²

English Designation

National Park

IUCN Category

II

WDPA ID Year of Designation

979

Reported Area

2032.5 km²

[Show all](#)