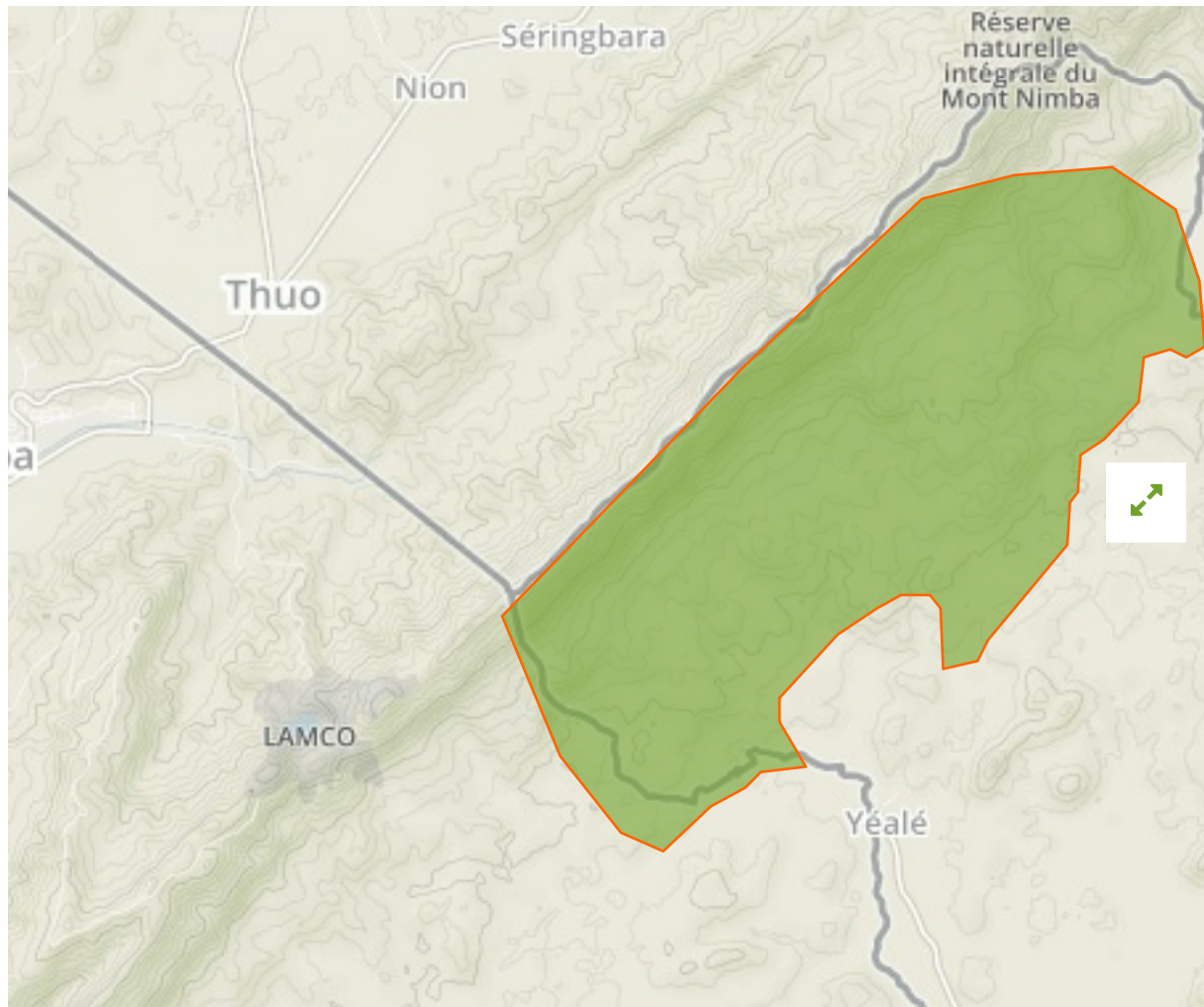


## Mount Nimba Integral Reserve in Côte D'Ivoire



The designations employed and the presentation of material on this map do not imply the expression of any opinion whatsoever on the part of the Secretariat of the United Nations concerning the legal status of any country, territory, city or area or of its authorities, or concerning the delimitation of its frontiers or boundaries.

WDPA ID

---

**1295**

Reported Area

---

**50.0 km<sup>2</sup>**

Vulnerability Assessment

---



Present [↗](#)

**Data Provider**

Office Ivoirien des Parcs et Reserves

## Management Effectiveness Evaluations

---

METT

2017

## Attributes

---

**Original Name**

**Mount Nimba Integral Reserve**

**English Designation**

**Integral National Reserve**

**IUCN Management Category**

**Ia**

Status

Designated

Type of Designation

National

Status Year

1944

Sublocation

CI-06

Governance Type

Government-delegated management

Management Authority

Office Ivoirien des Parcs et Reserves

Management Plan

Not Ready

International Criteria

Not Applicable

## Site network breakdown

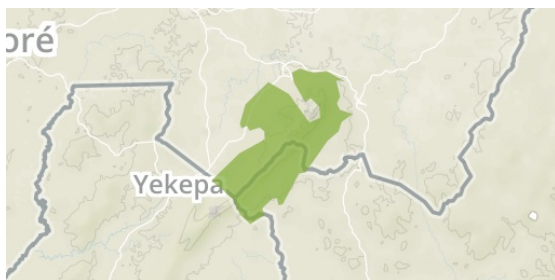
---

**Transboundary sites**

---

## Mount Nimba Strict Nature Reserve

in Guinea, Côte D'Ivoire



English Designation

World Heritage Site (natural or mixed)

IUCN Category

Not Applicable

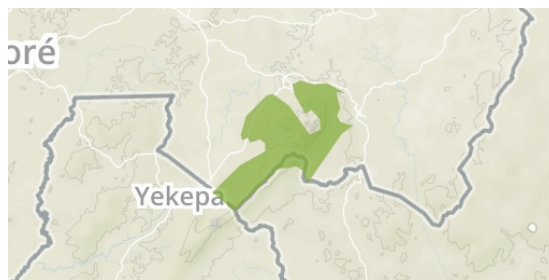
WDPA ID      Year of Designation  
2574

Reported Area

221.3 km<sup>2</sup>

## Mount Nimba

in Guinea



English Designation

Strict Nature Reserve

IUCN Category

Ia

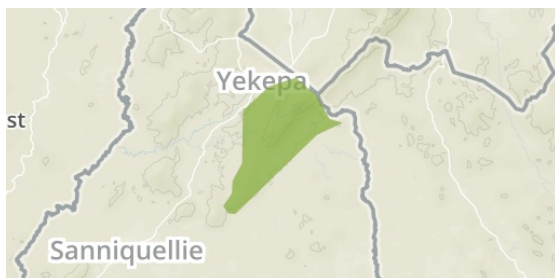
WDPA ID      Year of Designation  
29067

Reported Area

130.0 km<sup>2</sup>

## East Nimba Nature Reserve

in Liberia



English Designation

Nature Reserve

IUCN Category

Not Reported

WDPA ID      Year of Designation  
9176

Reported Area

135.0 km<sup>2</sup>