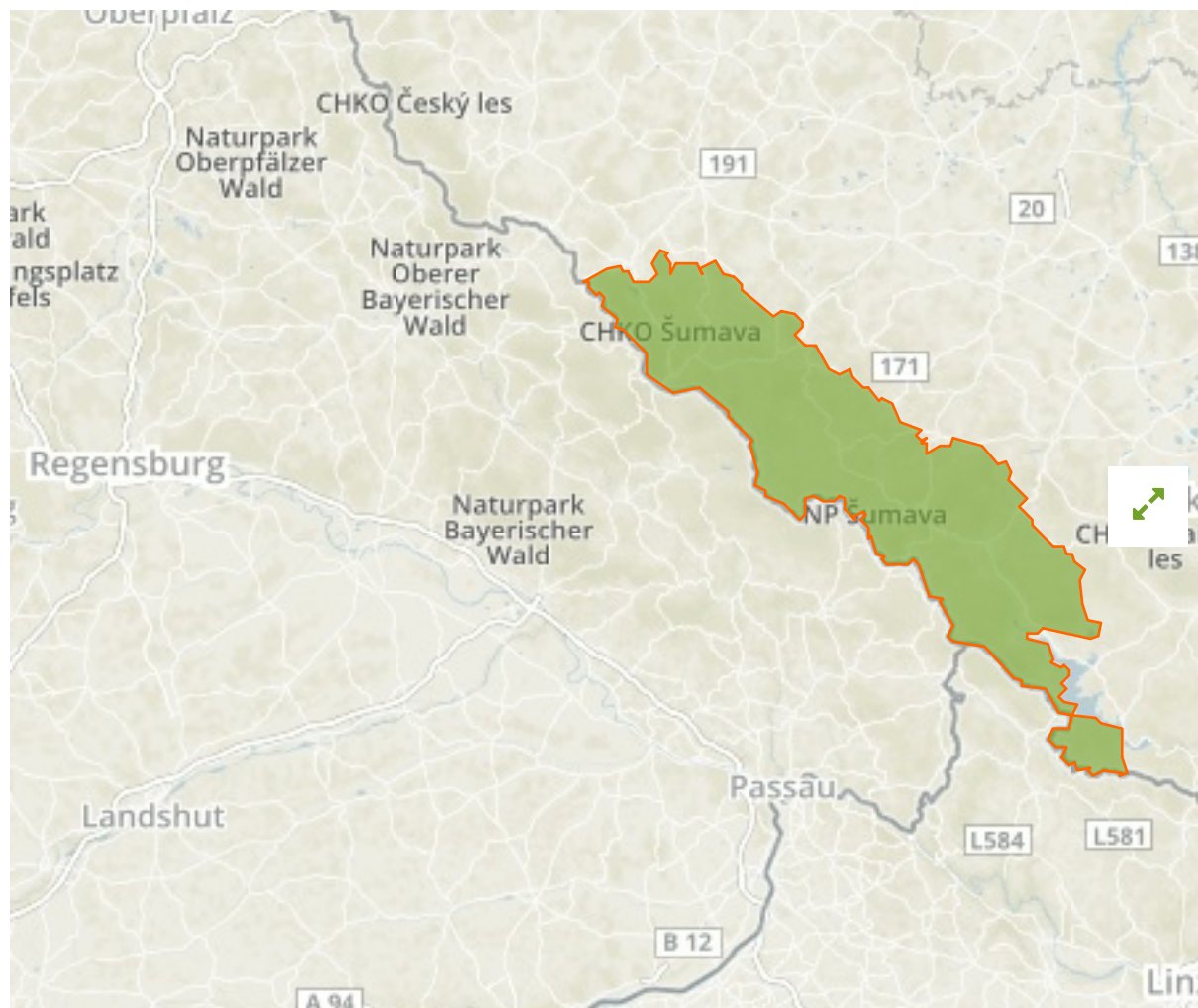


## Šumava in Czech Republic



The designations employed and the presentation of material on this map do not imply the expression of any opinion whatsoever on the part of the Secretariat of the United Nations concerning the legal status of any country, territory, city or area or of its authorities, or concerning the delimitation of its frontiers or boundaries.

WDPA ID

---

**20015**

Reported Area

---

**1671.17 km<sup>2</sup>**

Not Reported

## Management Effectiveness Evaluations

---

GOBI Survey **2006**

Stockholm BR Survey **2008**

## Attributes

---

**Original Name** **Šumava**

**English Designation** **UNESCO-MAB Biosphere Reserve**

**IUCN Management Category** **Not Applicable**

Status **Designated**

Type of Designation **International**

Status Year **1990**

Sublocation **CZ-JC**

Governance Type **Not Reported**

Management Authority **Not Reported**

Management Plan **Not Reported**

International Criteria **Not Applicable**

## Site network breakdown

---

### Transboundary sites

---

## Bílá Strž

in Czech Republic



English Designation

National Nature Reserve

IUCN Category

III

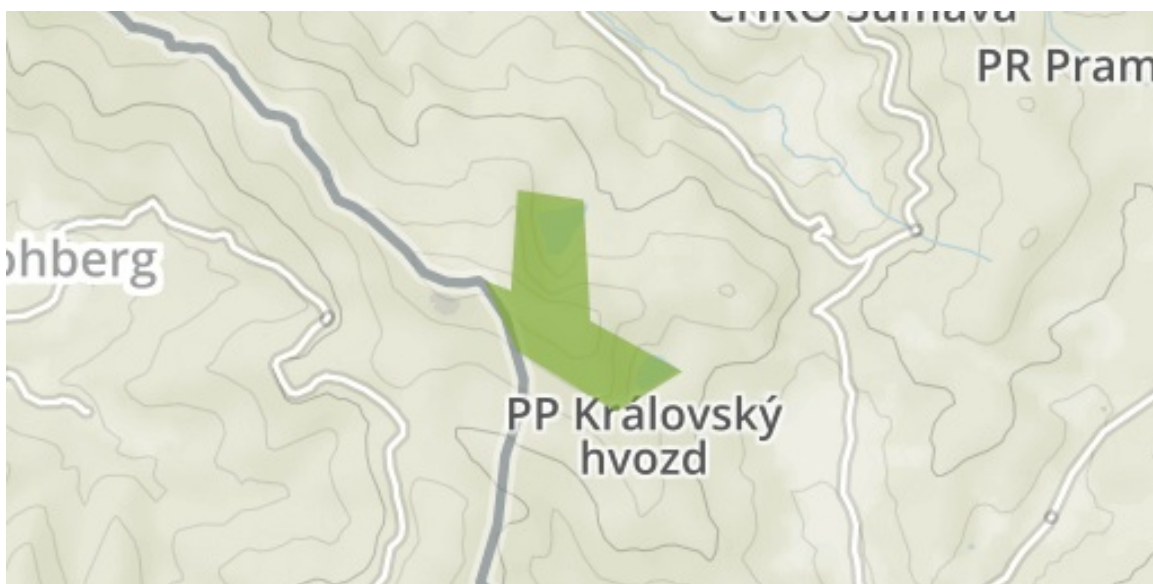
WDPA ID Year of Designation Reported Area

342000

0.8 km<sup>2</sup>

Černé A Čertovo Jezero

in Czech Republic



English Designation

National Nature Reserve

IUCN Category

III

WDPA ID Year of Designation Reported Area

342013

2.1 km<sup>2</sup>

## Kyselovský Les

in Czech Republic



English Designation

Nature Reserve

IUCN Category

IV

WDPA ID      Year of Designation      Reported Area

342746

0.1 km<sup>2</sup>

Otovský Potok

in Czech Republic



English Designation

Nature Reserve

IUCN Category

IV

WDPA ID      Year of Designation      Reported Area

342878

0.4 km<sup>2</sup>

## Buková Slat'

in Czech Republic



English Designation

Nature Monument

IUCN Category

IV

WDPA ID Year of Designation Reported Area

343401

0.2 km<sup>2</sup>

Házlův Kříž

in Czech Republic



English Designation

Nature Monument

IUCN Category

IV

WDPA ID Year of Designation Reported Area

343517

0.5 km<sup>2</sup>

Show all