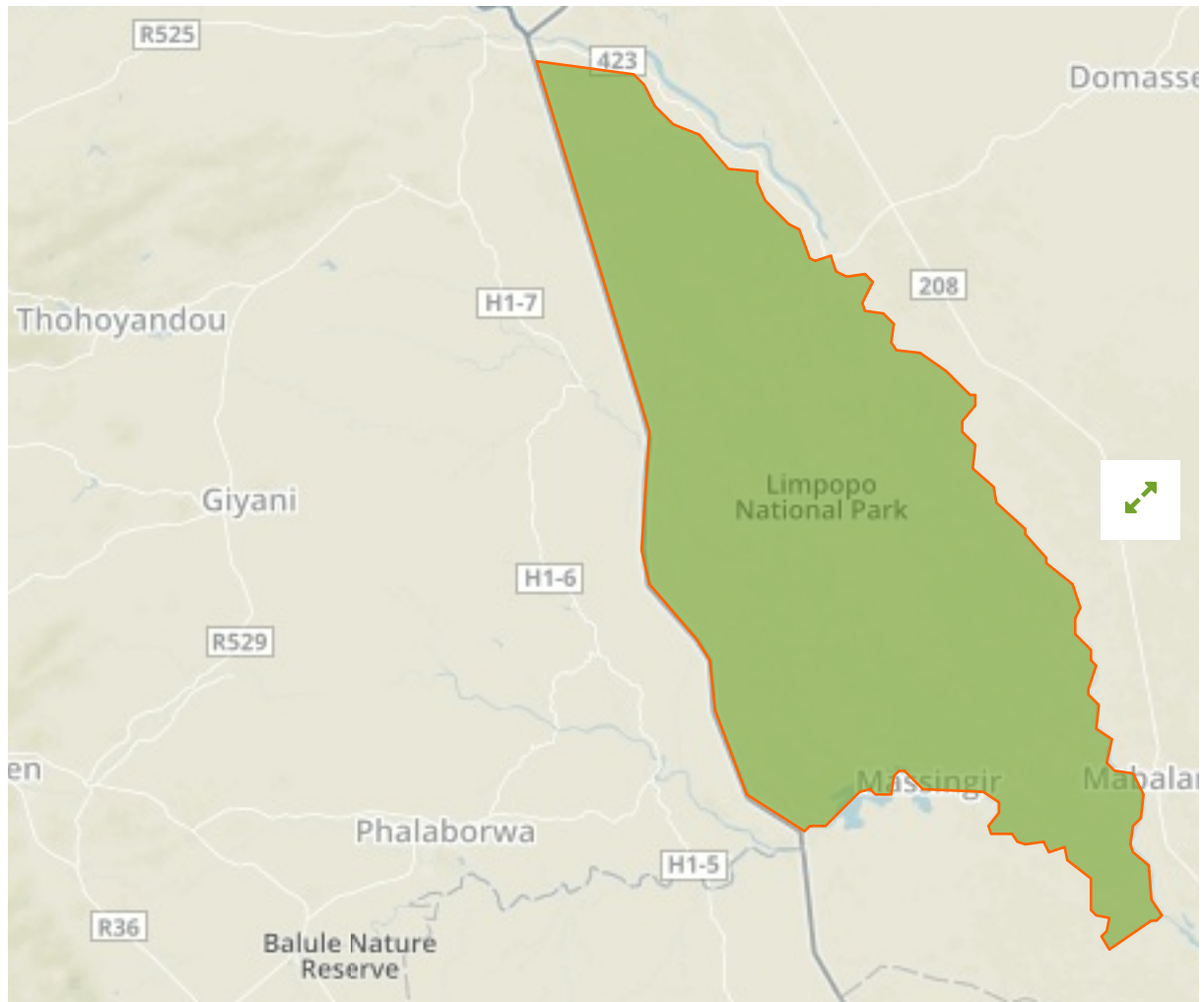


Limpopo in Mozambique



The designations employed and the presentation of material on this map do not imply the expression of any opinion whatsoever on the part of the Secretariat of the United Nations concerning the legal status of any country, territory, city or area or of its authorities, or concerning the delimitation of its frontiers or boundaries.

WDPA ID

20295

Reported Area

10000.0 km²

Management Effectiveness Evaluations

RAPPAM	2006
METT	2014, 2015, 2016

Attributes

Original Name	Limpopo
English Designation	National Park
IUCN Management Category	Not Reported
Status	Designated
Type of Designation	National
Status Year	2001
Sublocation	MZ-G
Governance Type	Federal or national ministry or agency
Management Authority	National Agency for Conservation Areas
Management Plan	Existing
International Criteria	Not Applicable

Site network breakdown

Transboundary sites

Vhembe Biosphere Reserve

in South Africa



English Designation
UNESCO-MAB Biosphere Reserve

IUCN Category
Not Applicable

WDPA ID Year of Designation
555547561

Reported Area
30375.9 km²

Kruger National Park

in South Africa



English Designation
National Park

IUCN Category
Not Reported

WDPA ID Year of Designation
873

Reported Area
1916915.4 km²

Kruger to Canyons

in South Africa



English Designation
UNESCO-MAB Biosphere Reserve

IUCN Category
Not Applicable

WDPA ID Year of Designation
900553

Reported Area
28748.1 km²