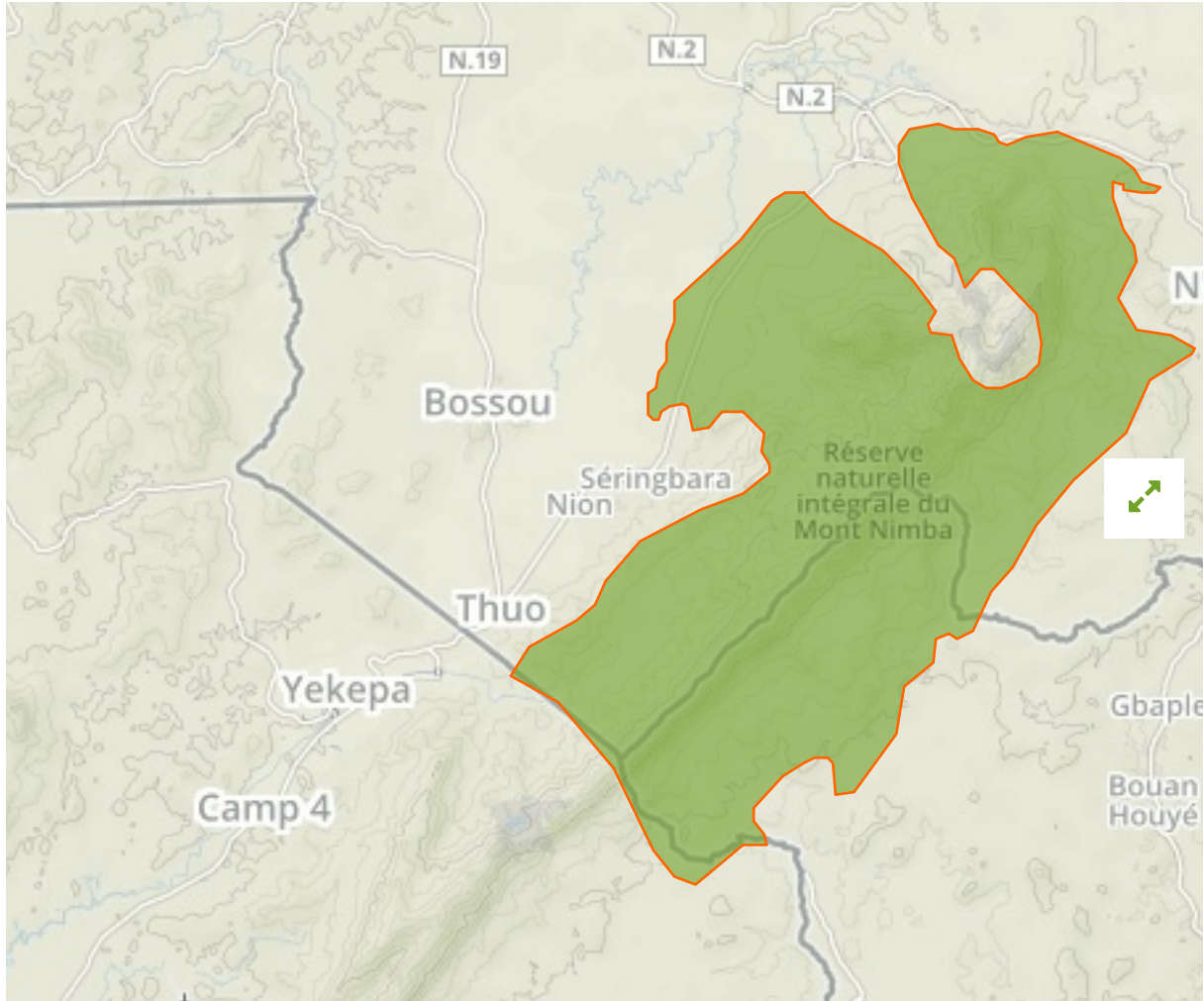


Mount Nimba Strict Nature Reserve in **Guinea** and Côte D'Ivoire



The designations employed and the presentation of material on this map do not imply the expression of any opinion whatsoever on the part of the Secretariat of the United Nations concerning the legal status of any country, territory, city or area or of its authorities, or concerning the delimitation of its frontiers or boundaries.

WDPA ID

2574

Reported Area

221.3 km²

Management Effectiveness Evaluations

Birdlife IBA

2001

Attributes

| | |
|---------------------------------|--|
| Original Name | Réserve naturelle intégrale du mont Nimba |
| English Designation | World Heritage Site (natural or mixed) |
| IUCN Management Category | Not Applicable |
| Status | Inscribed |
| Type of Designation | International |
| Status Year | 1981 |
| Sublocation | CI-06, GN-NZ |
| Governance Type | Not Reported |
| Management Authority | Not Reported |
| Management Plan | Not Reported |
| International Criteria | (ix)(x) |

Site network breakdown

Transboundary sites

Mount Nimba Integral Reserve

in Côte D'Ivoire



English Designation
Integral National Reserve

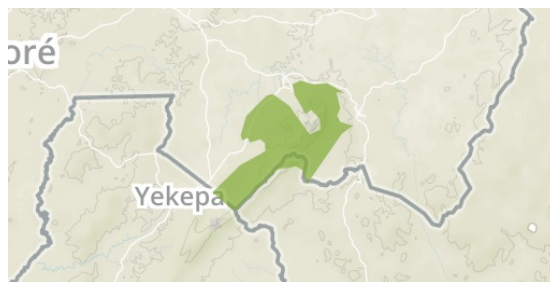
IUCN Category
Ia

WDPA ID Year of Designation
1295

Reported Area
50.0 km²

Mount Nimba

in Guinea



English Designation
Strict Nature Reserve

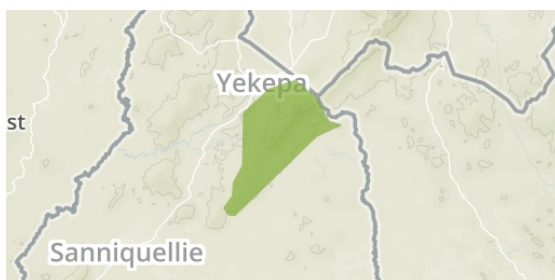
IUCN Category
Ia

WDPA ID Year of Designation
29067

Reported Area
130.0 km²

East Nimba Nature Reserve

in Liberia



English Designation
Nature Reserve

IUCN Category
Not Reported

WDPA ID Year of Designation
9176

Reported Area
135.0 km²