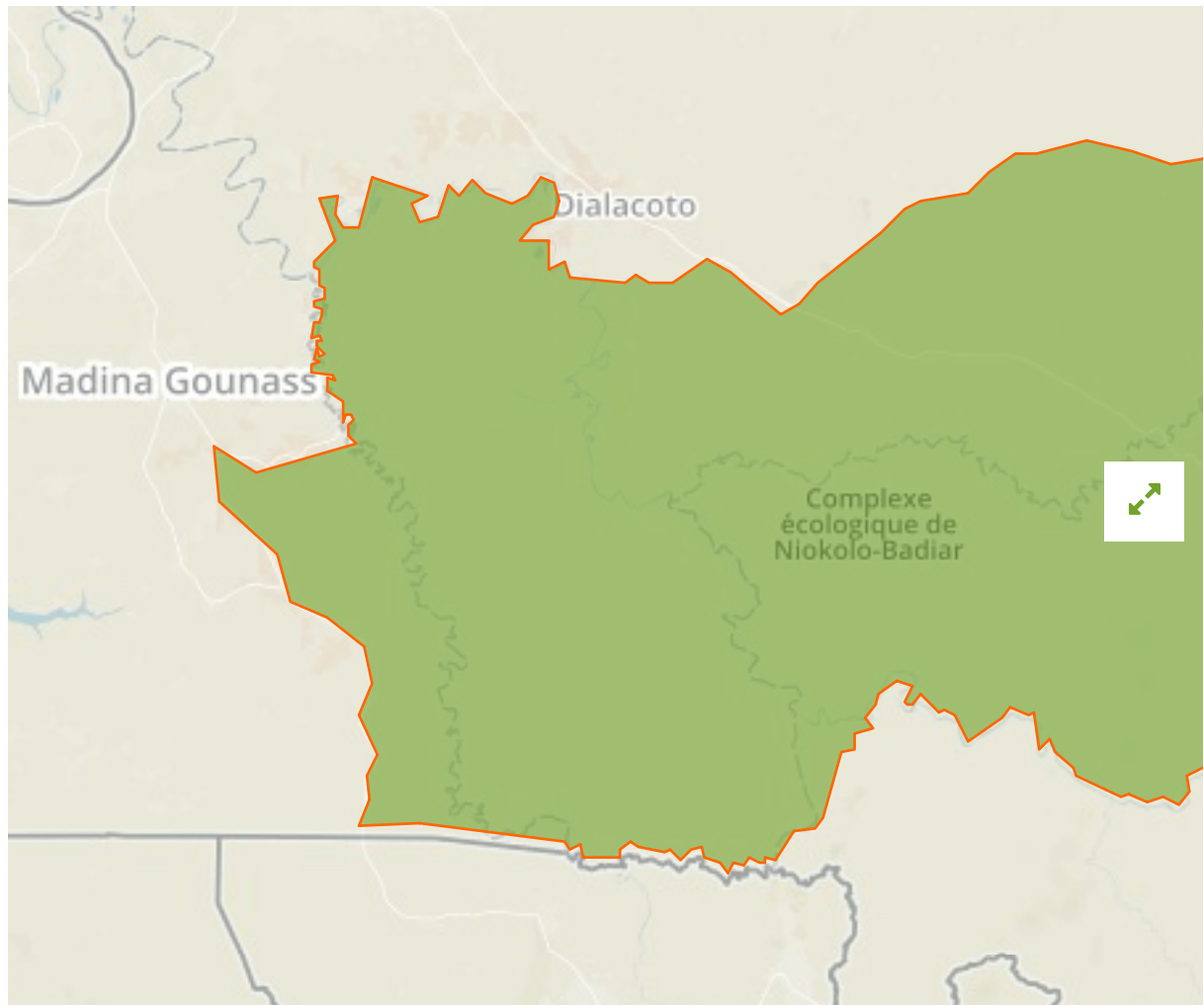


Niokolo-Koba National Park in Senegal



The designations employed and the presentation of material on this map do not imply the expression of any opinion whatsoever on the part of the Secretariat of the United Nations concerning the legal status of any country, territory, city or area or of its authorities, or concerning the delimitation of its frontiers or boundaries.

WDPA ID

2580

Reported Area

9130.0 km²

Vulnerability Assessment



Present [↗](#)

i Data Provider

IUCN World Heritage Programme

Management Effectiveness Evaluations

WH Outlook Report [2014](#)

Birdlife IBA [2001](#)

Attributes

Original Name [Parc national du Niokolo-Koba](#)

English Designation [World Heritage Site \(natural or mixed\)](#)

IUCN Management Category [Not Applicable](#)

Status [Inscribed](#)

Type of Designation [International](#)

Status Year [1981](#)

Sublocation [SN-TC](#)

Governance Type [Not Reported](#)

Management Authority [Not Reported](#)

Management Plan [Not Reported](#)

International Criteria [\(x\)](#)

Site network breakdown

Transboundary sites

Badiar

in Guinea



English Designation

National Park

IUCN Category

II

WDPA ID Year of Designation Reported Area

29069

382.0 km²

Parc national du Niokolo-Koba

in Senegal



English Designation

UNESCO-MAB Biosphere Reserve

IUCN Category

Not Applicable

WDPA ID Year of Designation Reported Area

3045

9130.0 km²

Niokolo Koba

in Senegal



English Designation

National Park

IUCN Category

II

WDPA ID Year of Designation Reported Area

865

9130.0 km²