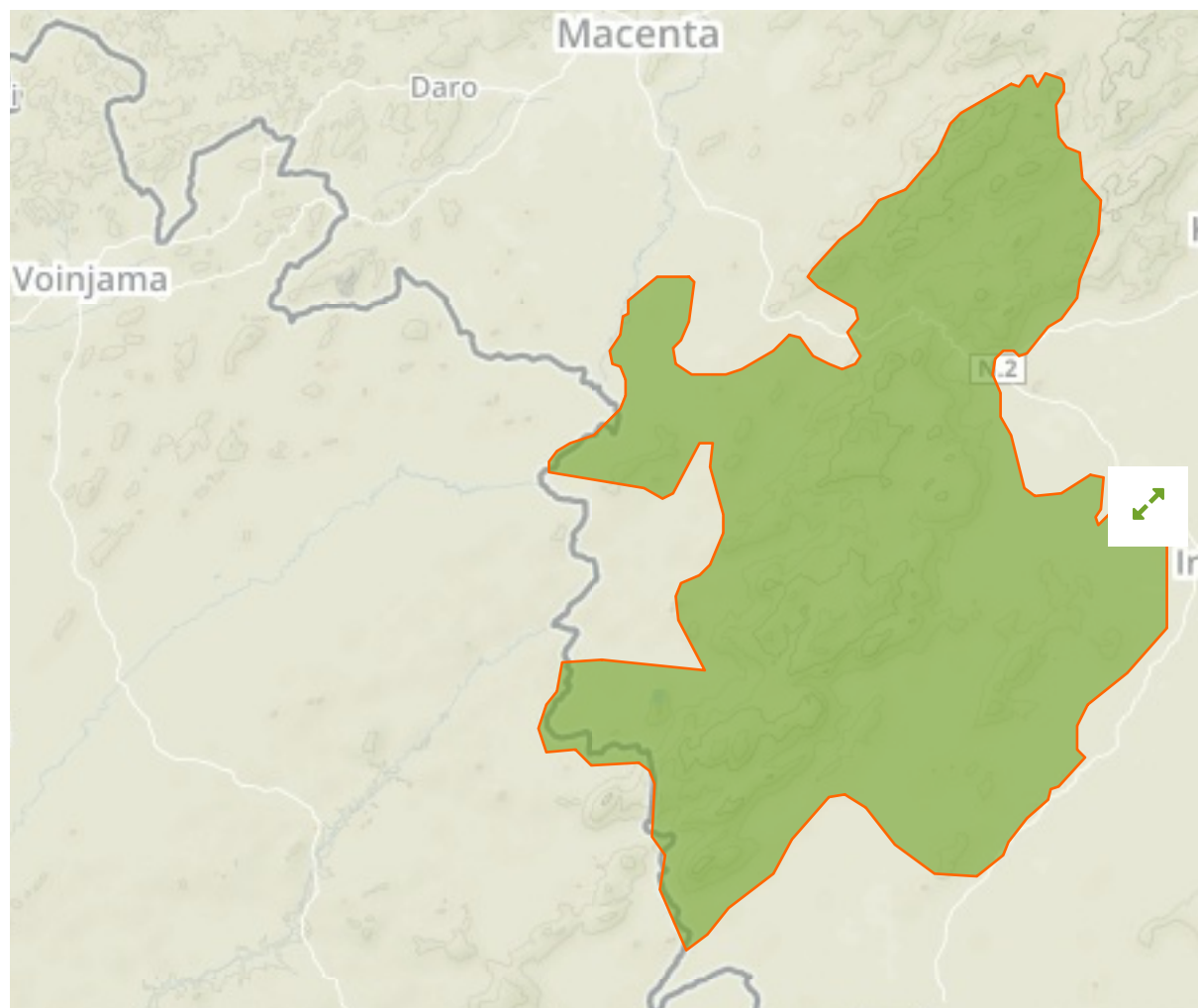


Massif du Ziama in Guinea



The designations employed and the presentation of material on this map do not imply the expression of any opinion whatsoever on the part of the Secretariat of the United Nations concerning the legal status of any country, territory, city or area or of its authorities, or concerning the delimitation of its frontiers or boundaries.

WDPA ID

29066

Reported Area

1161.7 km²

Vulnerability Assessment

Data Provider

Centre Technique Forestier Tropical (CTFT)/ Bureau pour le Développement de la Production Agricole (BDPA)/-SCET AGRI (1989)

Management Effectiveness Evaluations

Birdlife IBA	2001
RAPPAM	2007

Attributes

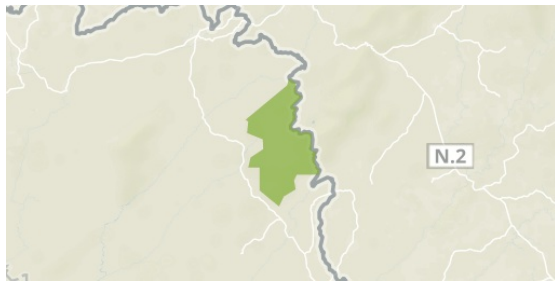
Original Name	Massif du Ziama
English Designation	Classified Forest
IUCN Management Category	Not Reported
Status	Designated
Type of Designation	National
Status Year	Not Reported
Sublocation	GN-NZ
Governance Type	Not Reported
Management Authority	Not Reported
Management Plan	Not Reported
International Criteria	Not Applicable

Site network breakdown

Transboundary sites

Wonegizi Nature Reserve

in Liberia



English Designation

Nature Reserve

IUCN Category

Not Reported

WDPA ID Year of Designation

7414

Reported Area

1374.3 km²