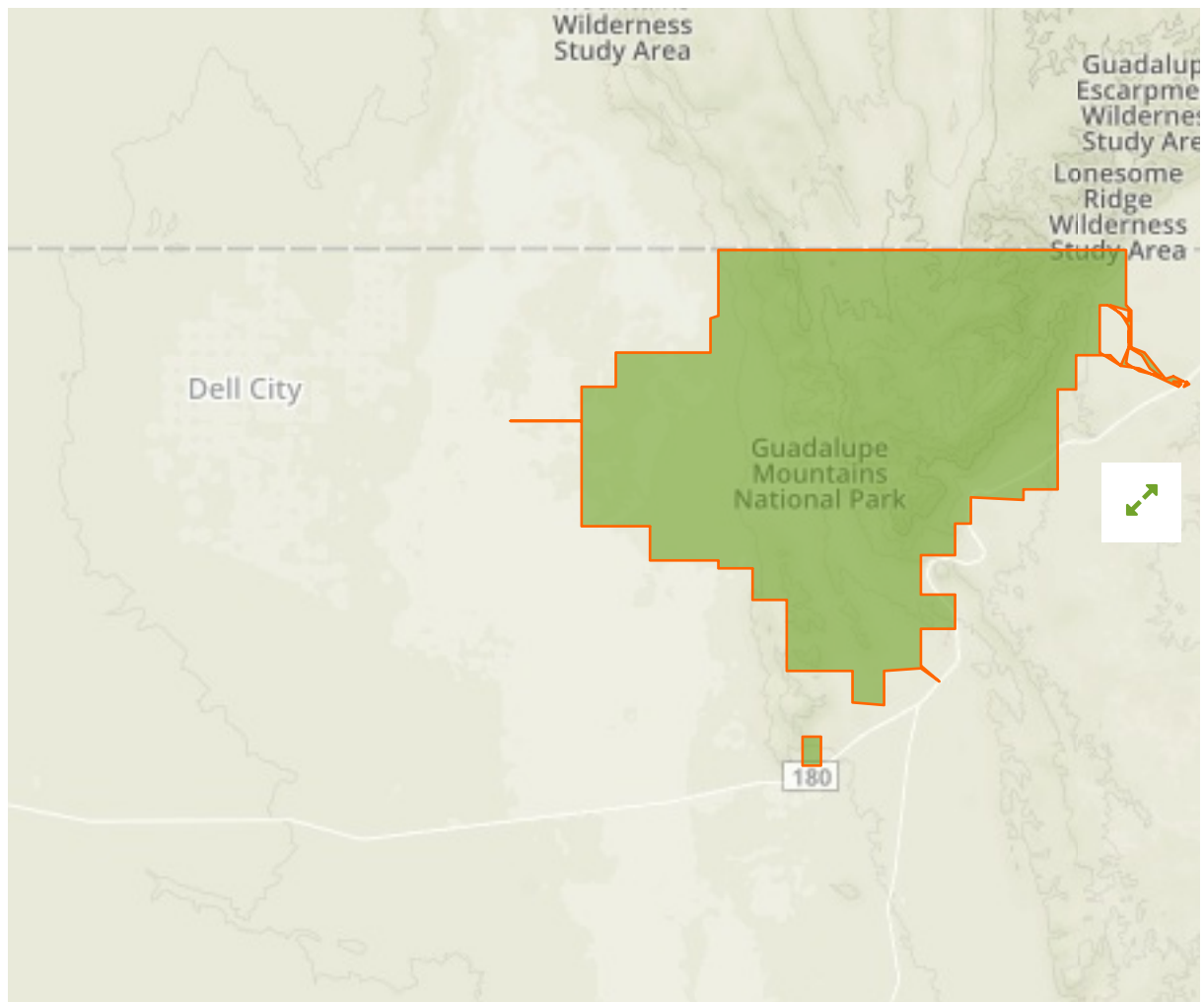


## Guadalupe Mountains in United States of America



The designations employed and the presentation of material on this map do not imply the expression of any opinion whatsoever on the part of the Secretariat of the United Nations concerning the legal status of any country, territory, city or area or of its authorities, or concerning the delimitation of its frontiers or boundaries.

WDPA ID

**2984**

Reported Area

**365.84 km<sup>2</sup>**

**i Data Provider**

---

US Geological Survey, Gap Analysis Program (GAP), National Operations Office, Boise State University

## Management Effectiveness Evaluations

---

No information available

## Attributes

---

**Original Name** **Guadalupe Mountains**

**English Designation** **National Park**

**IUCN Management Category** **II**

Status **Designated**

Type of Designation **National**

Status Year **1978**

Sublocation **US-TX**

Governance Type **Collaborative governance**

Management Authority **National Park Service**

Management Plan **Not Reported**

International Criteria **Not Applicable**