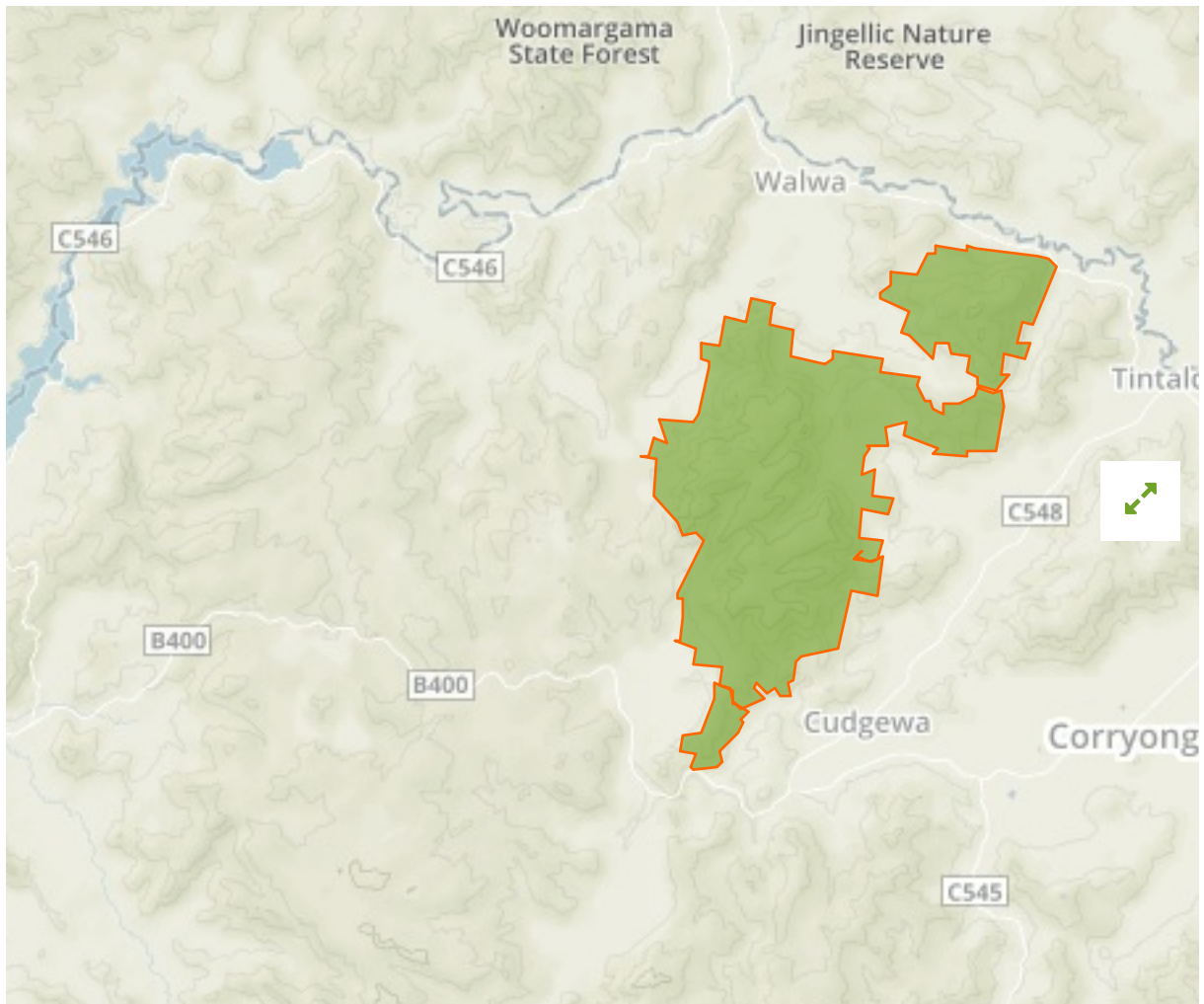


Burrowa - Pine Mountain National Park in [Australia](#)



The designations employed and the presentation of material on this map do not imply the expression of any opinion whatsoever on the part of the Secretariat of the United Nations concerning the legal status of any country, territory, city or area or of its authorities, or concerning the delimitation of its frontiers or boundaries.

WDPA ID

311340

Reported Area

189.64 km²

Management Effectiveness Evaluations

Victorian SOP 2005, 2010, 2013

Attributes

Original Name	Burrowa - Pine Mountain National Park
English Designation	National Park
IUCN Management Category	II
Status	Designated
Type of Designation	National
Status Year	1978
Sublocation	AU-VIC
Governance Type	Sub-national ministry or agency
Management Authority	AU-VIC_DELWP
Management Plan	Not Reported
International Criteria	Not Applicable