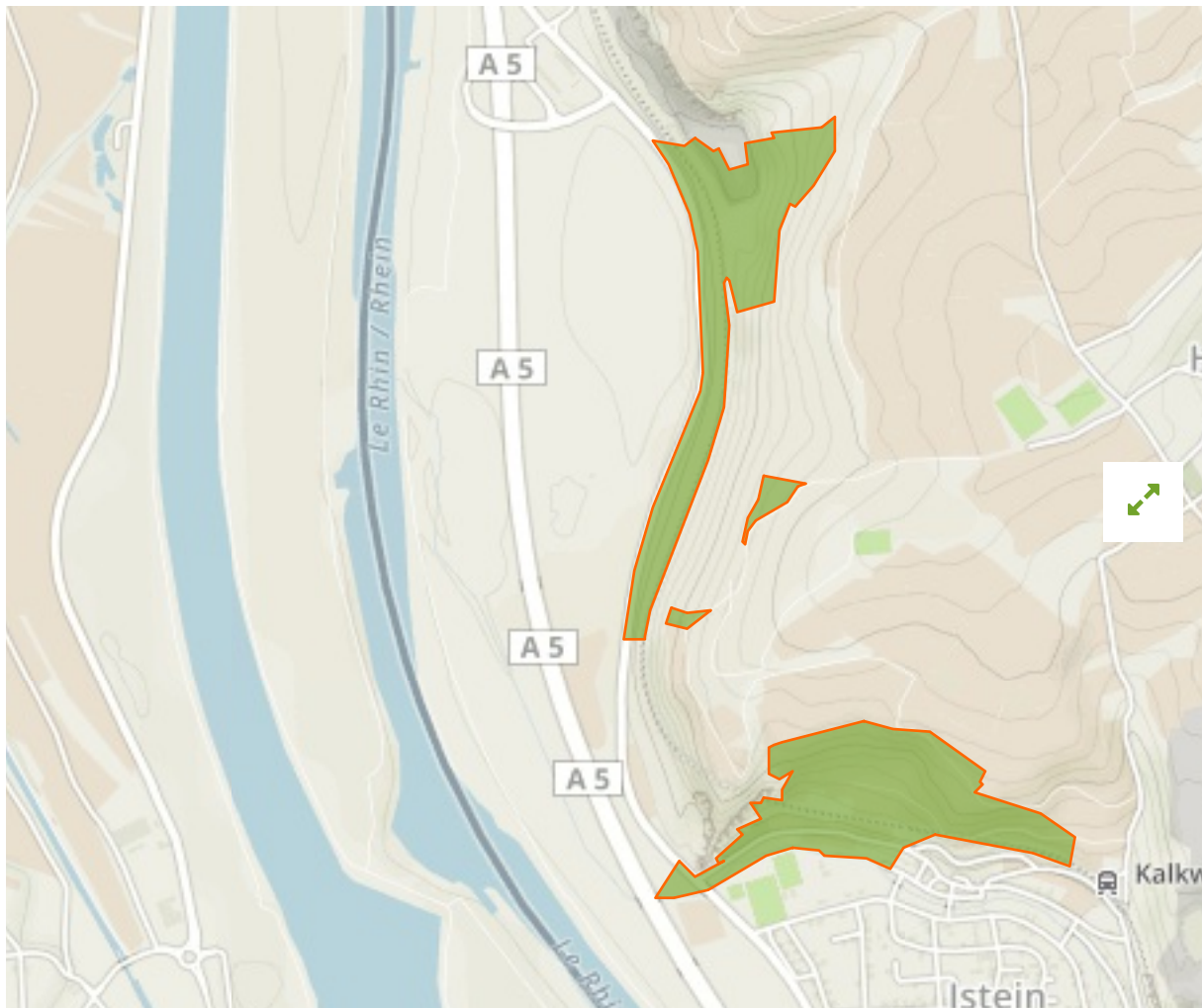


Isteiner Klotz in Germany



The designations employed and the presentation of material on this map do not imply the expression of any opinion whatsoever on the part of the Secretariat of the United Nations concerning the legal status of any country, territory, city or area or of its authorities, or concerning the delimitation of its frontiers or boundaries.

WDPA ID

321980

Reported Area

0.36 km²

Management Effectiveness Evaluations

No information available

Attributes

Original Name	Isteiner Klotz
English Designation	Landscape Protection Area
IUCN Management Category	V
Status	Designated
Type of Designation	National
Status Year	1937
Sublocation	
Governance Type	Federal or national ministry or agency
Management Authority	Bundesamt für Naturschutz
Management Plan	Not Reported
International Criteria	Not Applicable

Site network breakdown

Transboundary sites

Isteiner Klotz

in Germany

Blansinger Grien

in Germany



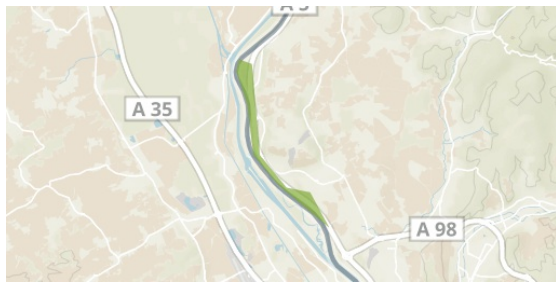
English Designation
Nature Reserve

IUCN Category
IV

WDPA ID Year of Designation
163933

Reported Area
0.3 km²

Rheinvorland
in Germany



English Designation
Landscape Protection Area

IUCN Category
V

WDPA ID Year of Designation
323871

Reported Area
3.1 km²

**Secteur Alluvial Rhin-Ried-Bruch;
Haut-Rhin**
in France



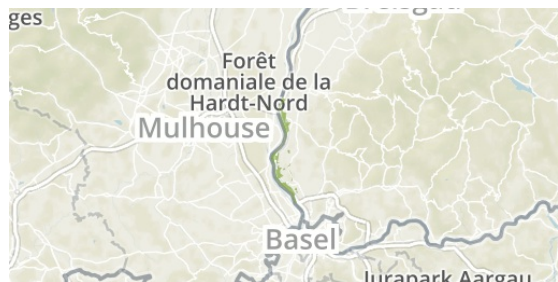
English Designation
Nature Reserve

IUCN Category
IV

WDPA ID Year of Designation
318201

Reported Area
0.2 km²

**Markgräfler Rheinebene von Weil bis
Neuenburg**
in Germany



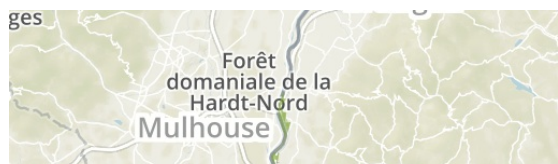
English Designation
Site of Community Importance
(Habitats Directive)

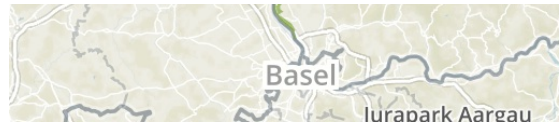
IUCN Category
Not Reported

WDPA ID Year of Designation
555522203

Reported Area
15.3 km²

**Rheinniederung Haltingen -
Neuenburg mit Vorbergzone**
in Germany





English Designation
Site of Community Importance
(Habitats Directive)

IUCN Category
Not Reported

WDPA ID **Year of Designation**
555526027

Reported Area
43.4 km²

English Designation
Special Protection Area (Birds
Directive)

IUCN Category
Not Reported

WDPA ID **Year of Designation**
555537950

Reported Area
14.8 km²

[Show all](#)