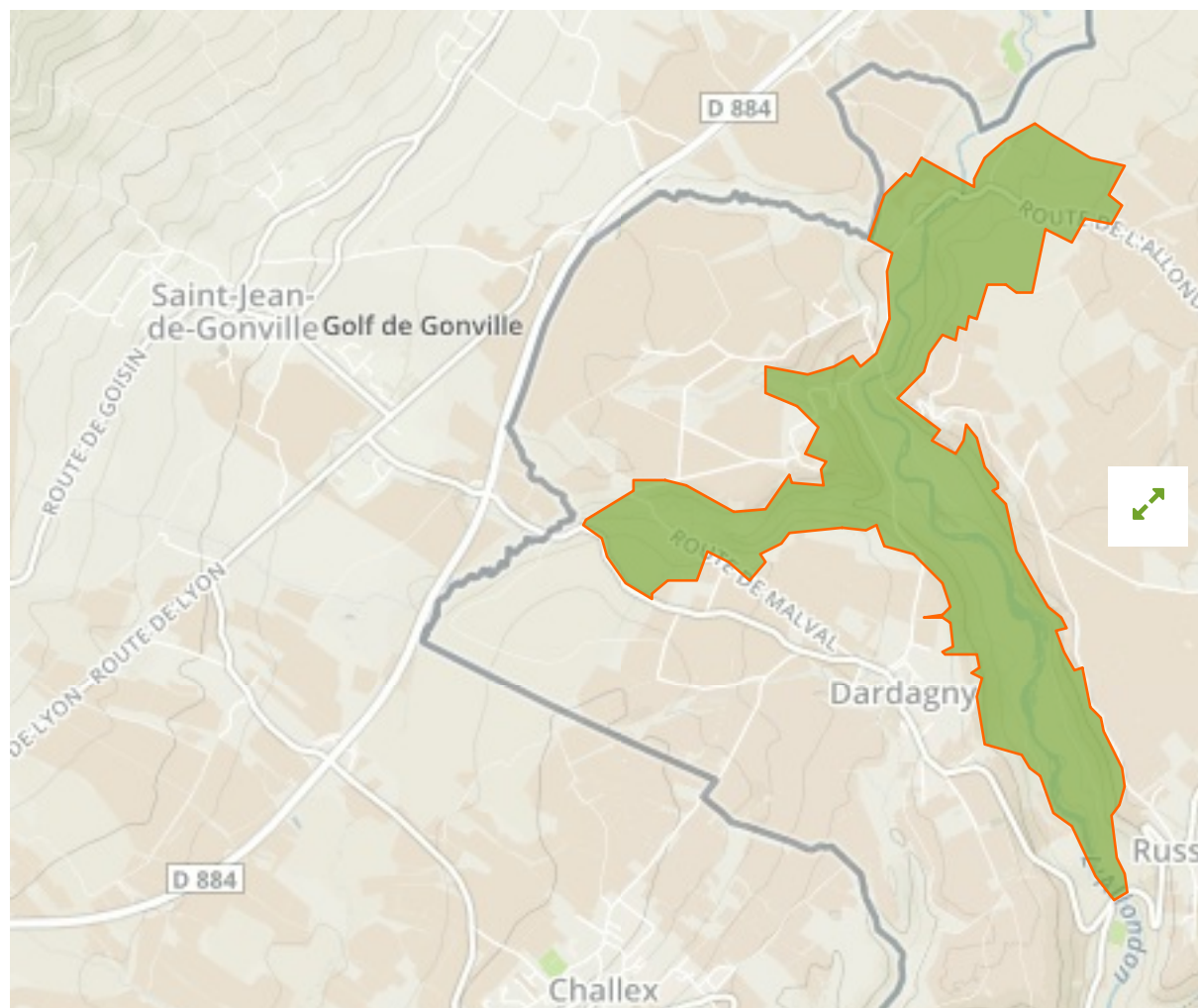


## Allondon in Switzerland



The designations employed and the presentation of material on this map do not imply the expression of any opinion whatsoever on the part of the Secretariat of the United Nations concerning the legal status of any country, territory, city or area or of its authorities, or concerning the delimitation of its frontiers or boundaries.

WDPA ID

**347403**

Reported Area

**2.63 km<sup>2</sup>**

## Management Effectiveness Evaluations

---

National Inventory 2011

### Attributes

---

<b>Original Name</b>	<b>Allondon</b>
<b>English Designation</b>	<b>Federal Inventory Of Amphibian Spawning Areas Of National Importance</b>
<b>IUCN Management Category</b>	<b>IV</b>
Status	Designated
Type of Designation	National
Status Year	2001
Sublocation	
Governance Type	Federal or national ministry or agency
Management Authority	FOEN, Species, Ecosystems, Landscapes Division, Postfach, 3003 Bern
Management Plan	Not Reported
International Criteria	Not Applicable

### Site network breakdown

---

#### Transboundary sites

---

**Vallon De L'Allondon**  
in Switzerland

**Sur La Tourne**  
in Switzerland



**English Designation**  
Federal Inventory Of Alluvial Zones  
Of National Importance

**IUCN Category**  
IV

**WDPA ID**      **Year of Designation**  
148734

**Reported Area**  
1.0 km<sup>2</sup>

### Les Granges

in Switzerland



**English Designation**  
Federal Inventory Of Dry  
Grasslands And Pastures Of  
National Importance

**IUCN Category**  
IV

**WDPA ID**      **Year of Designation**  
555513431

**Reported Area**  
0.0 km<sup>2</sup>

### Malval

in Switzerland



**English Designation**  
Federal Inventory Of Dry  
Grasslands And Pastures Of  
National Importance

**IUCN Category**  
IV

**WDPA ID**      **Year of Designation**  
555513425

**Reported Area**  
0.0 km<sup>2</sup>

### Missezon

in Switzerland



**English Designation**  
Federal Inventory Of Dry  
Grasslands And Pastures Of  
National Importance

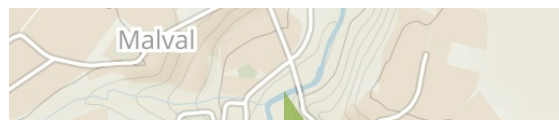
**IUCN Category**  
IV

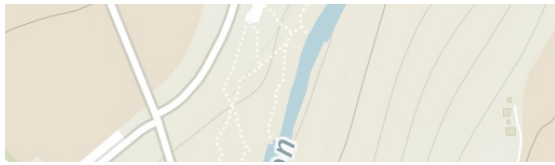
**WDPA ID**      **Year of Designation**  
555513436

**Reported Area**  
0.0 km<sup>2</sup>

### Les Îles

in Switzerland





**English Designation**  
Federal Inventory Of Dry  
Grasslands And Pastures Of  
National Importance

**IUCN Category**  
IV

**WDPA ID**      **Year of Designation**  
555513443

**Reported Area**  
0.0 km<sup>2</sup>



**English Designation**  
Federal Inventory Of Dry  
Grasslands And Pastures Of  
National Importance

**IUCN Category**  
IV

**WDPA ID**      **Year of Designation**  
555513452

**Reported Area**  
0.0 km<sup>2</sup>

[Show all](#)