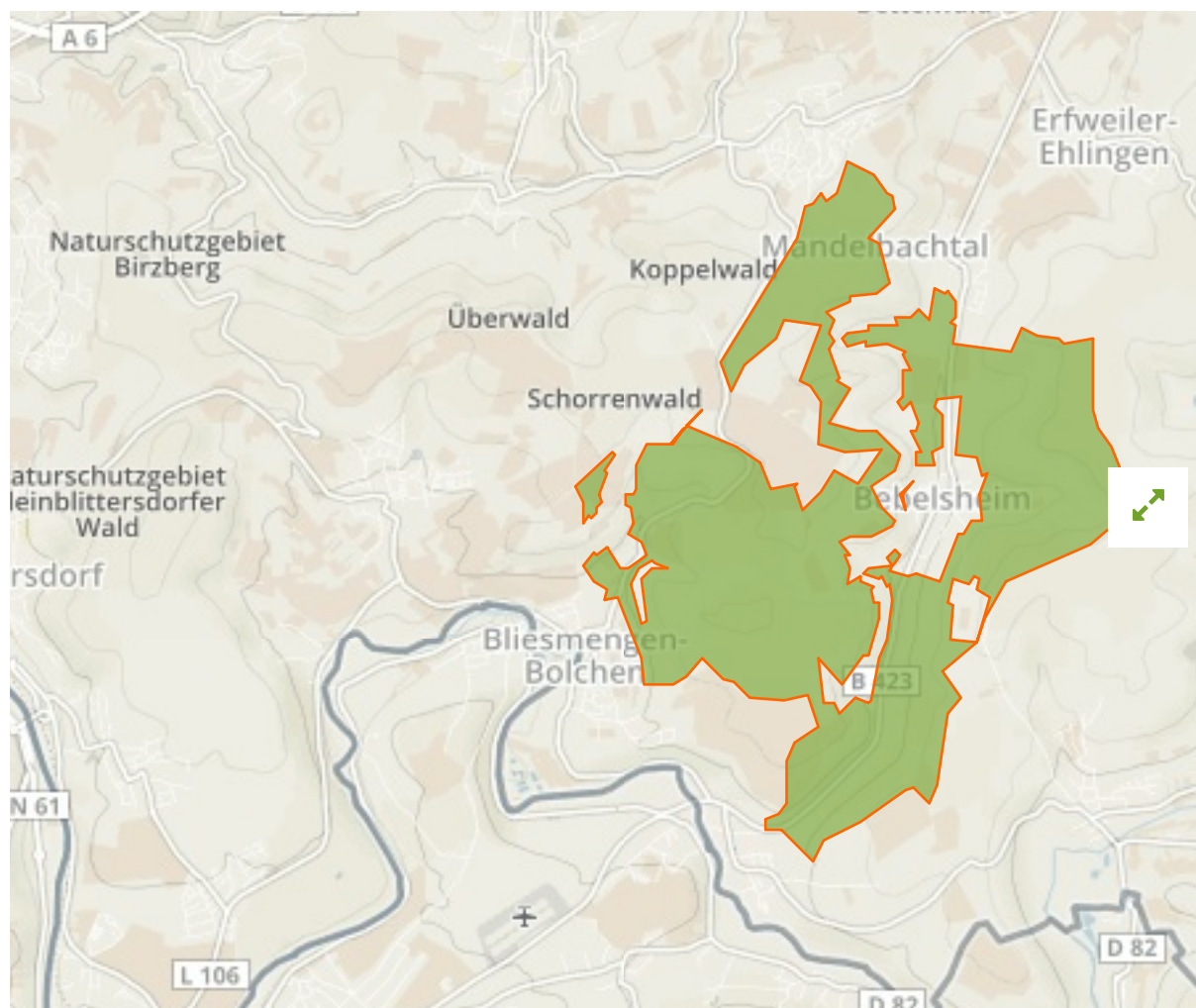


## Lsg In Mandelbachtal (Ehem. Landkreis St. Ingbert) in Germany



The designations employed and the presentation of material on this map do not imply the expression of any opinion whatsoever on the part of the Secretariat of the United Nations concerning the legal status of any country, territory, city or area or of its authorities, or concerning the delimitation of its frontiers or boundaries.

WDPA ID

---

**390171**

Reported Area

---

**12.56 km<sup>2</sup>**

## Management Effectiveness Evaluations

---

No information available

## Attributes

---

<b>Original Name</b>	<b>Lsg In Mandelbachtal (Ehem. Landkreis St. Ingbert)</b>
<b>English Designation</b>	<b>Landscape Protection Area</b>
<b>IUCN Management Category</b>	<b>V</b>
Status	Designated
Type of Designation	National
Status Year	1970
Sublocation	
Governance Type	Federal or national ministry or agency
Management Authority	Bundesamt für Naturschutz
Management Plan	Not Reported
International Criteria	Not Applicable

## Site network breakdown

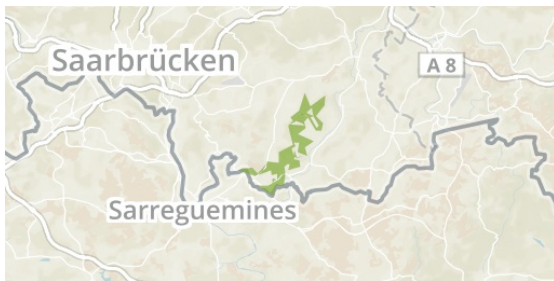
---

### Transboundary sites

---

**Südlicher Bliesgau/Auf Der Lohe**  
in Germany

**Lsg Gersheim (Ehem. Landkreis St. Ingbert)**  
in Germany



English Designation  
Nature Reserve

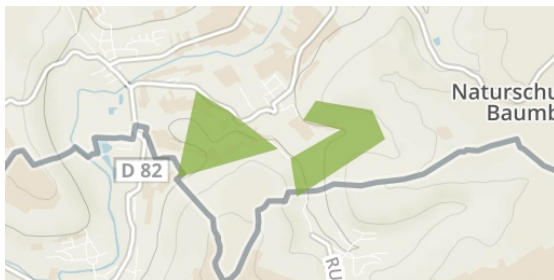
IUCN Category  
IV

WDPA ID      Year of Designation  
329663

Reported Area  
14.7 km<sup>2</sup>

**Lsg Gersheim (Ehem. Landkreis Homburg)**

in Germany



English Designation  
Landscape Protection Area

IUCN Category  
V

WDPA ID      Year of Designation  
390159

Reported Area  
0.9 km<sup>2</sup>

**Blies**

in Germany



English Designation  
Landscape Protection Area

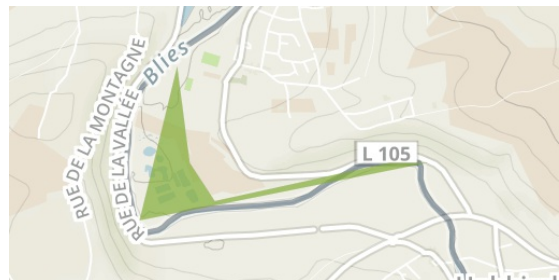
IUCN Category  
V

WDPA ID      Year of Designation  
390157

Reported Area  
0.2 km<sup>2</sup>

**Lsg In Mandelbachtal (Ehem. Landkreis St. Ingbert)**

in Germany



English Designation  
Landscape Protection Area

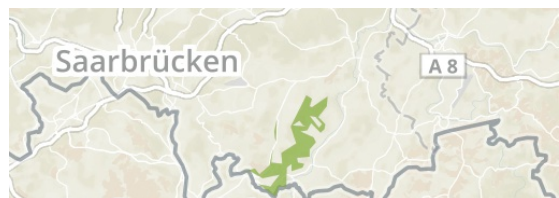
IUCN Category  
V

WDPA ID      Year of Designation  
390172

Reported Area  
0.4 km<sup>2</sup>

**Muschelkalkgebiet bei Gersheim und Blieskastel**

in Germany





**English Designation**  
Special Protection Area (Birds Directive)

**IUCN Category**  
Not Reported

**WDPA ID**      **Year of Designation**  
555537808

**Reported Area**  
3.0 km<sup>2</sup>

[Show all](#)



**English Designation**  
Special Protection Area (Birds Directive)

**IUCN Category**  
Not Reported

**WDPA ID**      **Year of Designation**  
555537838

**Reported Area**  
16.4 km<sup>2</sup>