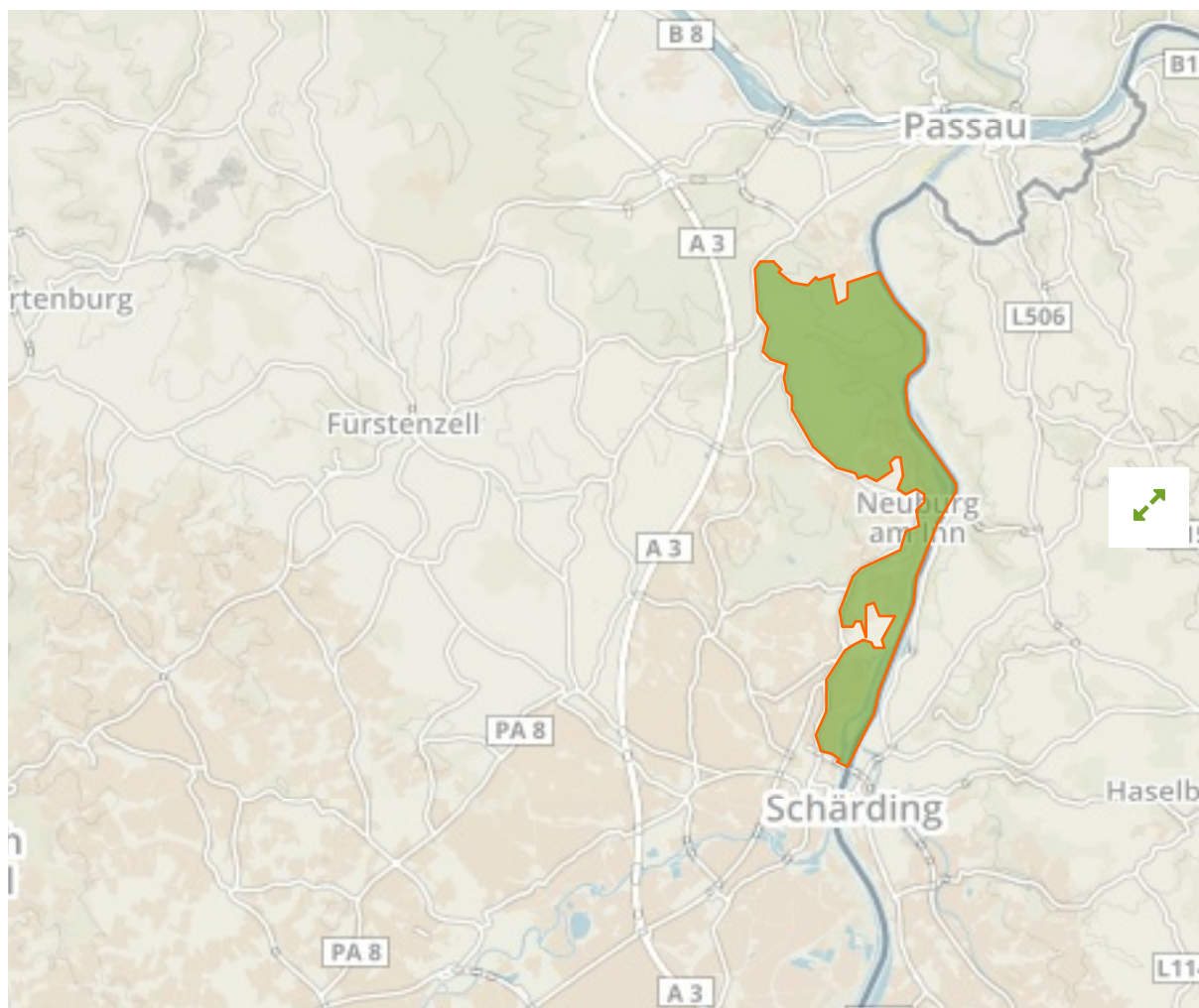


Schutz von Landschaftsteilen in den Gemeinde Neuburg am Inn und Neuhaus am Inn als LSG "Vornbacher Enge" in Germany



The designations employed and the presentation of material on this map do not imply the expression of any opinion whatsoever on the part of the Secretariat of the United Nations concerning the legal status of any country, territory, city or area or of its authorities, or concerning the delimitation of its frontiers or boundaries.

WDPA ID

395990

Reported Area

13.86 km²

Data Provider

European Environment Agency (EEA)

Management Effectiveness Evaluations

No information available

Attributes

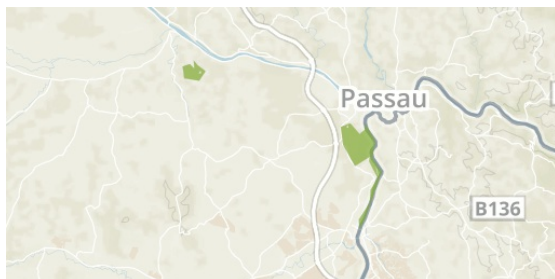
| | |
|---------------------------------|---|
| Original Name | Schutz von Landschaftsteilen in den Gemeinde Neuburg am Inn und Neuhaus am Inn als LSG "Vornbacher Enge" |
| English Designation | Landscape Protection Area |
| IUCN Management Category | V |
| Status | Designated |
| Type of Designation | National |
| Status Year | 1994 |
| Sublocation | |
| Governance Type | Federal or national ministry or agency |
| Management Authority | Bundesamt für Naturschutz |
| Management Plan | Not Reported |
| International Criteria | Not Applicable |

Site network breakdown

Transboundary sites

Östlicher Neuburger Wald und Innleiten bis Vornbach

in Germany



English Designation
Site of Community Importance
(Habitats Directive)

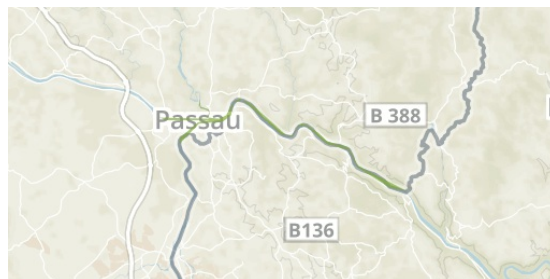
IUCN Category
Not Reported

WDPA ID Year of Designation
555521940

Reported Area
12.4 km²

Donau von Kachlet bis Jochenstein mit Inn- und Ilzmündung

in Germany



English Designation
Site of Community Importance
(Habitats Directive)

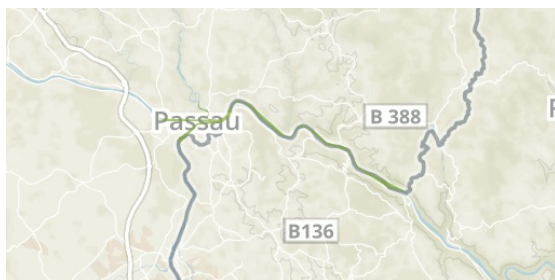
IUCN Category
Not Reported

WDPA ID Year of Designation
555521941

Reported Area
5.1 km²

Donau von Kachlet bis Jochenstein mit Inn- und Ilzmündung

in Germany



English Designation
Site of Community Importance
(Habitats Directive)

IUCN Category
Not Reported

WDPA ID Year of Designation
555521941

Reported Area
5.1 km²