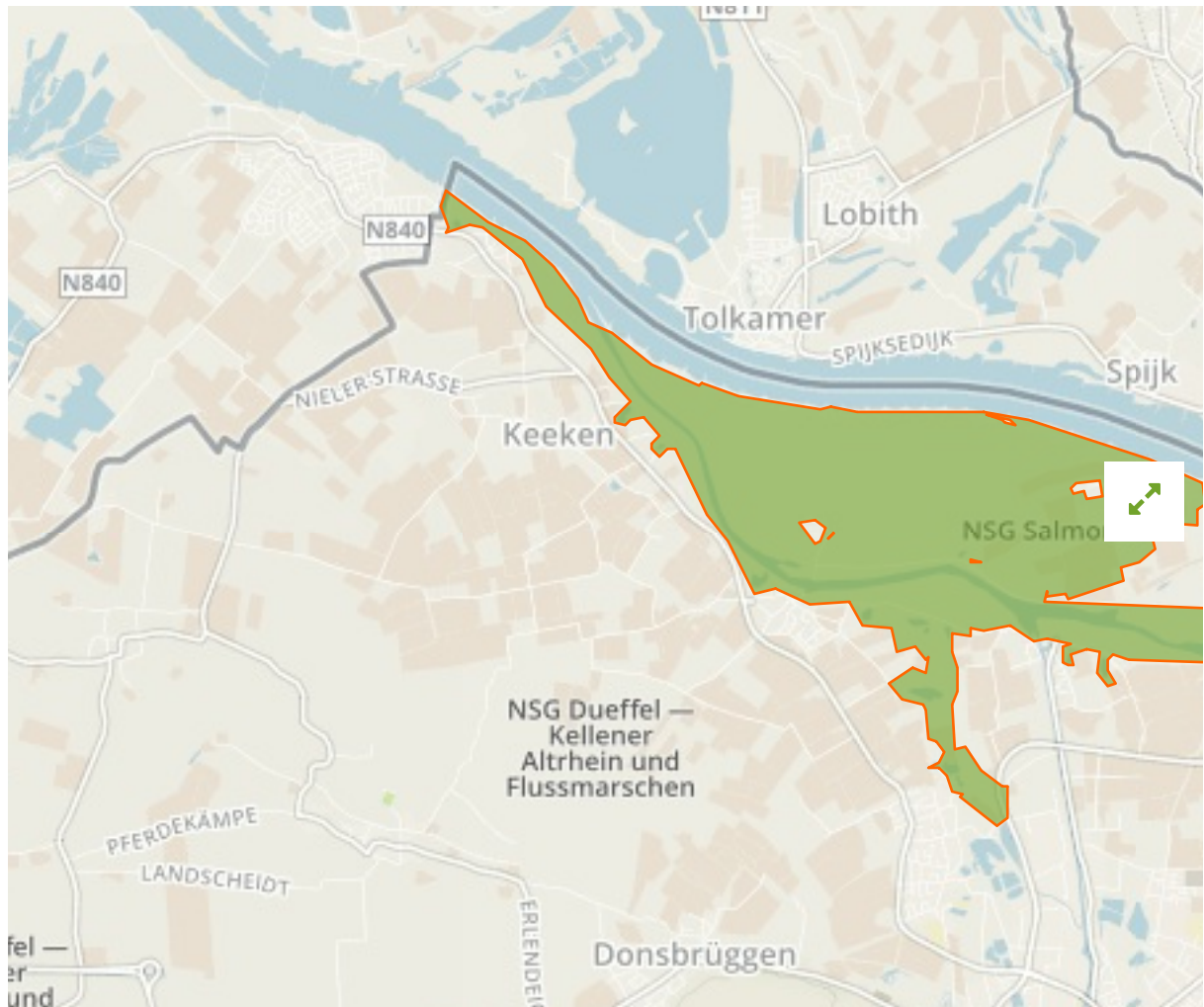


## NSG Salmorth, nur Teilfläche in Germany



The designations employed and the presentation of material on this map do not imply the expression of any opinion whatsoever on the part of the Secretariat of the United Nations concerning the legal status of any country, territory, city or area or of its authorities, or concerning the delimitation of its frontiers or boundaries.

WDPA ID

**555519361**

Reported Area

**9.32 km<sup>2</sup>**

## Management Effectiveness Evaluations

---

No information available

## Attributes

---

**Original Name** NSG Salmorth, nur Teilfläche

**English Designation** Site of Community Importance (Habitats Directive)

**IUCN Management Category** Not Reported

Status Designated

Type of Designation Regional

Status Year 2004

Sublocation

Governance Type Federal or national ministry or agency

Management Authority Kreis Kleve Kreis Kleve

Management Plan Not Reported

International Criteria Not Applicable

## Site network breakdown

---

### Transboundary sites

---

## Nsg Emmericher Ward

in Germany



English Designation

Nature Reserve

IUCN Category

IV

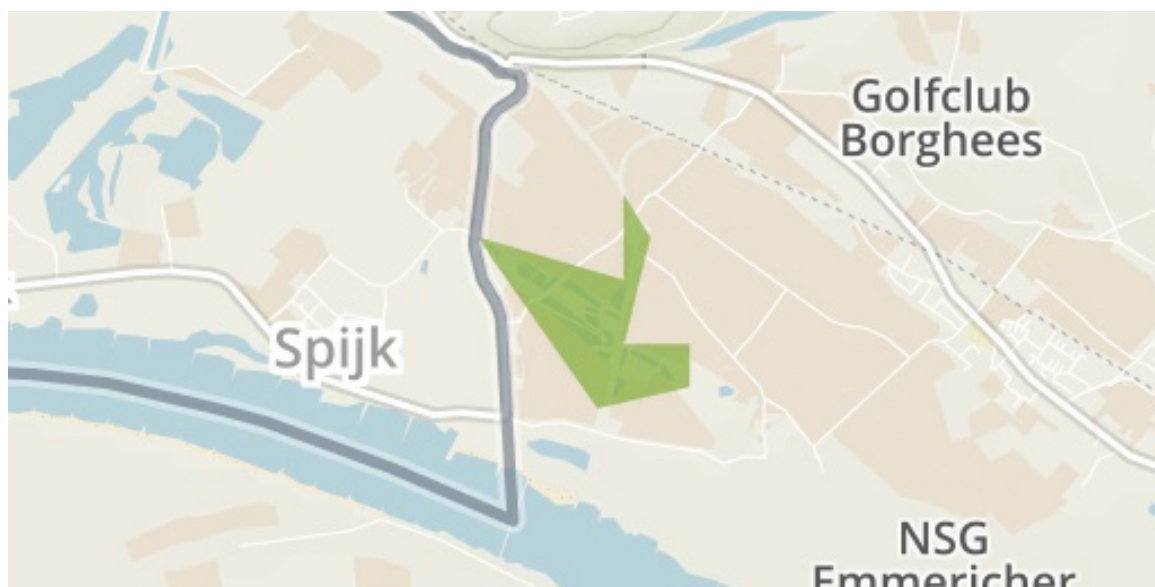
WDPA ID      Year of Designation      Reported Area

162940

3.1 km<sup>2</sup>

**Nsg Die Moiedtjes**

in Germany



English Designation

Nature Reserve

IUCN Category

IV

WDPA ID      Year of Designation      Reported Area

318292

0.3 km<sup>2</sup>

## Nsg Dueffel - Kellener Altrhein Und Flussmarschen

in Germany



English Designation

Nature Reserve

IUCN Category

IV

WDPA ID      Year of Designation      Reported Area

318308

38.2 km<sup>2</sup>

**NSG Emmericher Ward**

in Germany



English Designation

Site of Community Importance (Habitats Directive)

IUCN Category

Not Reported

WDPA ID      Year of Designation      Reported Area

555519363

2.5 km<sup>2</sup>



## Rhein-Fischschutzzonen zwischen Emmerich und Bad Honnef

in Germany



English Designation

Site of Community Importance (Habitats Directive)

IUCN Category

Not Reported

WDPA ID      Year of Designation      Reported Area

555519677

23.4 km<sup>2</sup>

**Vogelschutzgebiet 'Unterer Niederrhein'**

in Germany



English Designation

Special Protection Area (Birds Directive)

IUCN Category

Not Reported

WDPA ID      Year of Designation      Reported Area

555537488

258.1 km<sup>2</sup>

[Show all](#)