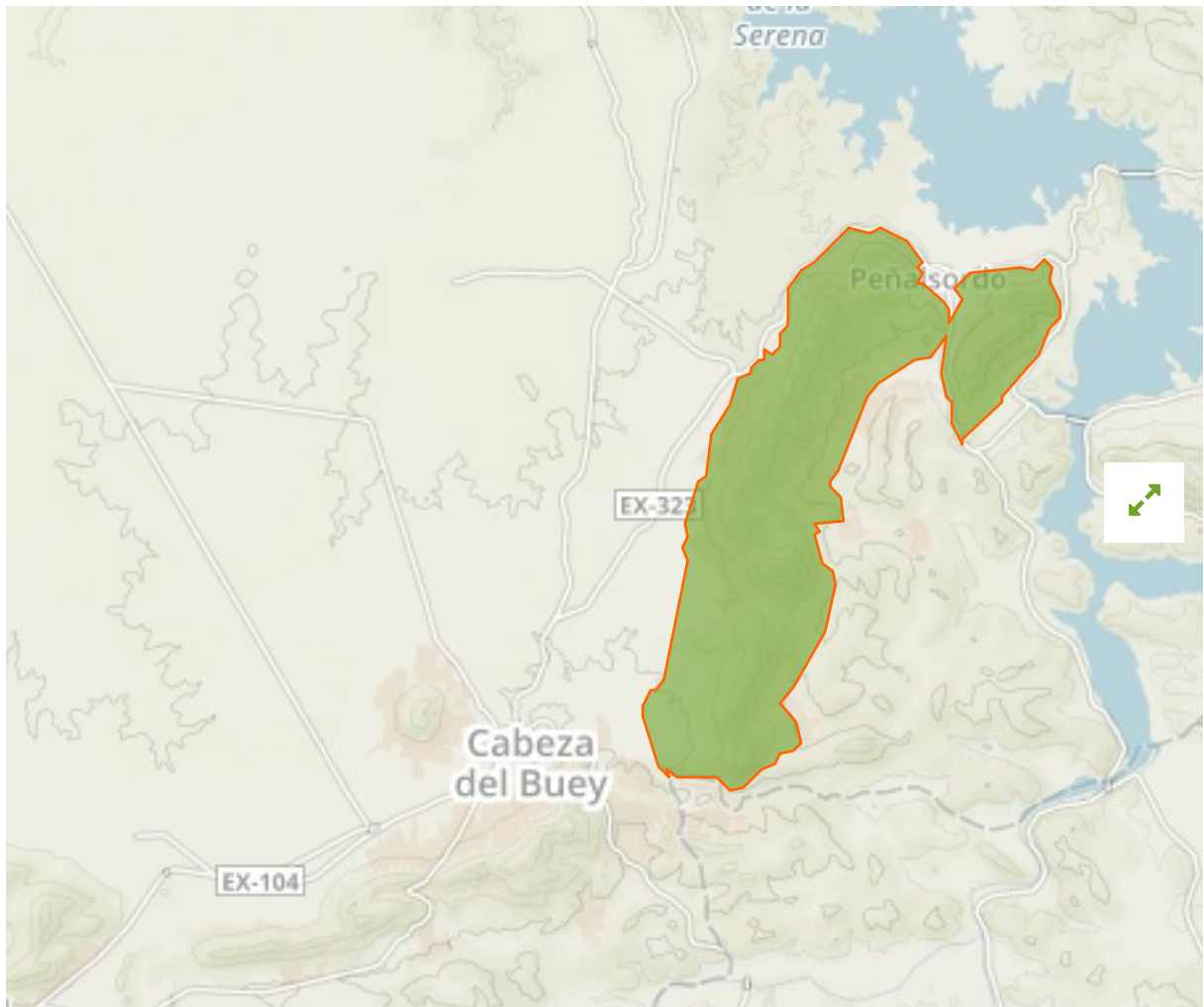


Sierras de Peñalsordo y Capilla in Spain



The designations employed and the presentation of material on this map do not imply the expression of any opinion whatsoever on the part of the Secretariat of the United Nations concerning the legal status of any country, territory, city or area or of its authorities, or concerning the delimitation of its frontiers or boundaries.

WDPA ID

555538465

Reported Area

45.17 km²

Management Effectiveness Evaluations

No information available

Attributes

Original Name	Sierras de Peñalsordo y Capilla
English Designation	Special Protection Area (Birds Directive)
IUCN Management Category	Not Assigned
Status	Designated
Type of Designation	Regional
Status Year	2003
Sublocation	
Governance Type	Sub-national ministry or agency
Management Authority	Junta de Extremadura. Consejería de Medio Ambiente y Rural; Políticas Agrarias y Territorio. Dirección General de Medio Ambiente
Management Plan	View Management Plan
International Criteria	Not Applicable