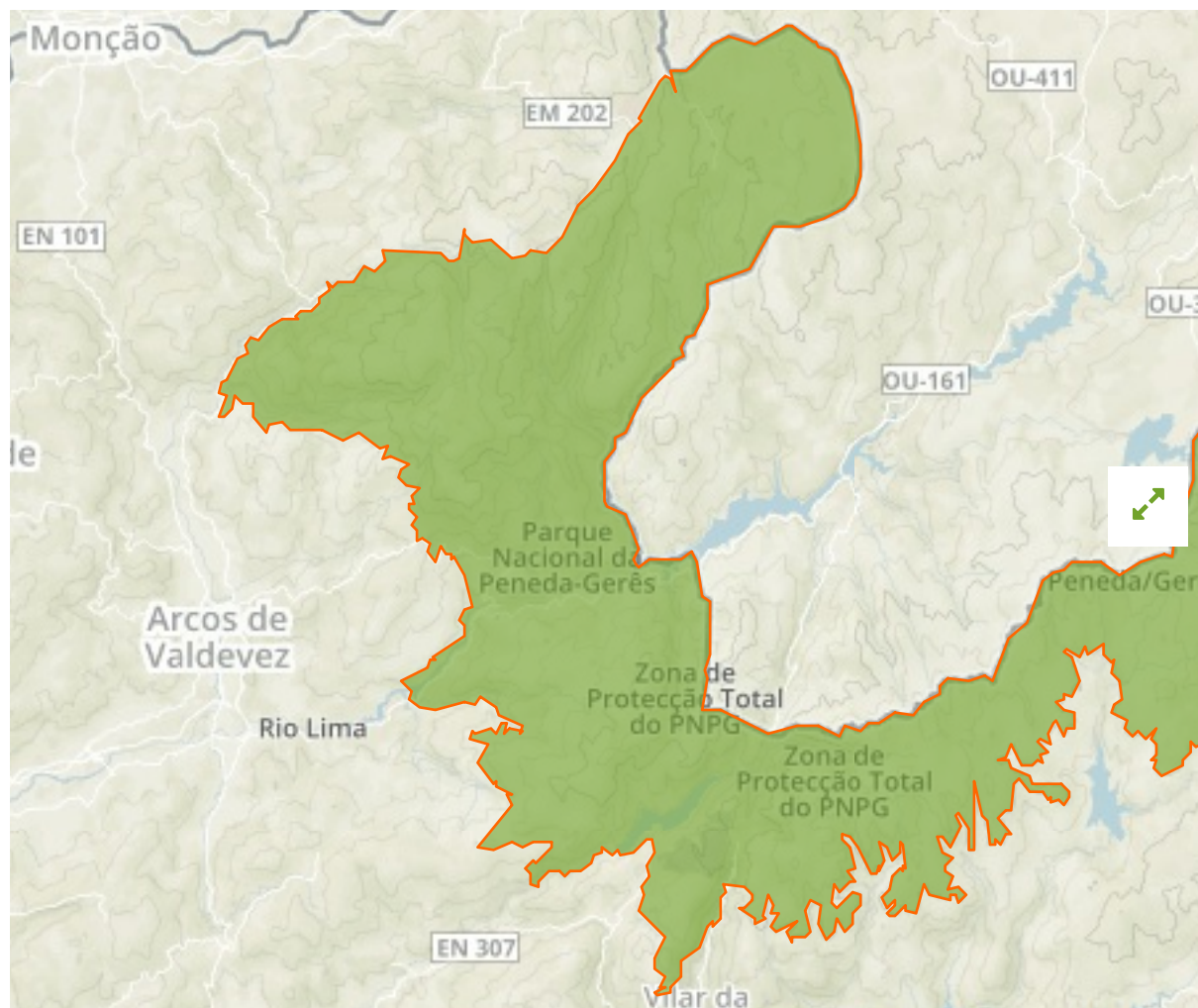


Serra do Gerês in Portugal



The designations employed and the presentation of material on this map do not imply the expression of any opinion whatsoever on the part of the Secretariat of the United Nations concerning the legal status of any country, territory, city or area or of its authorities, or concerning the delimitation of its frontiers or boundaries.

WDPA ID

555540877

Reported Area

634.32 km²

Management Effectiveness Evaluations

Birdlife IBA [2005](#)

Attributes

Original Name [Serra do Gerês](#)

English Designation [Special Protection Area \(Birds Directive\)](#)

IUCN Management Category [Not Reported](#)

Status [Designated](#)

Type of Designation [Regional](#)

Status Year [1988](#)

Sublocation

Governance Type [Federal or national ministry or agency](#)

Management Authority [Instituto da Conservação da Natureza e das Florestas, I.P.](#)

Management Plan [Not Reported](#)

International Criteria [Not Applicable](#)

Site network breakdown

Transboundary sites

Baixa Limia

in Spain



English Designation

Site of Community Importance (Habitats Directive)

IUCN Category

Not Reported

WDPA ID

555523061

Year of Designation

339.2 km²

Reported Area
Peneda / Gerês

in Portugal



English Designation

Site of Community Importance (Habitats Directive)

IUCN Category

Not Reported

WDPA ID

555531072

Year of Designation

895.7 km²

Baixa Limia - Serra do Xurés

in Spain



English Designation

Special Protection Area (Birds Directive)

IUCN Category

Not Reported

WDPA ID

555538502

Year of Designation

312.9 km²

Reported Area

Baixa Limia-Serra Do Xures

in Spain



English Designation

Natura 2000

IUCN Category

Not Assigned

WDPA ID

71215

Year of Designation

313.9 km²

Reported Area

[Show all](#)