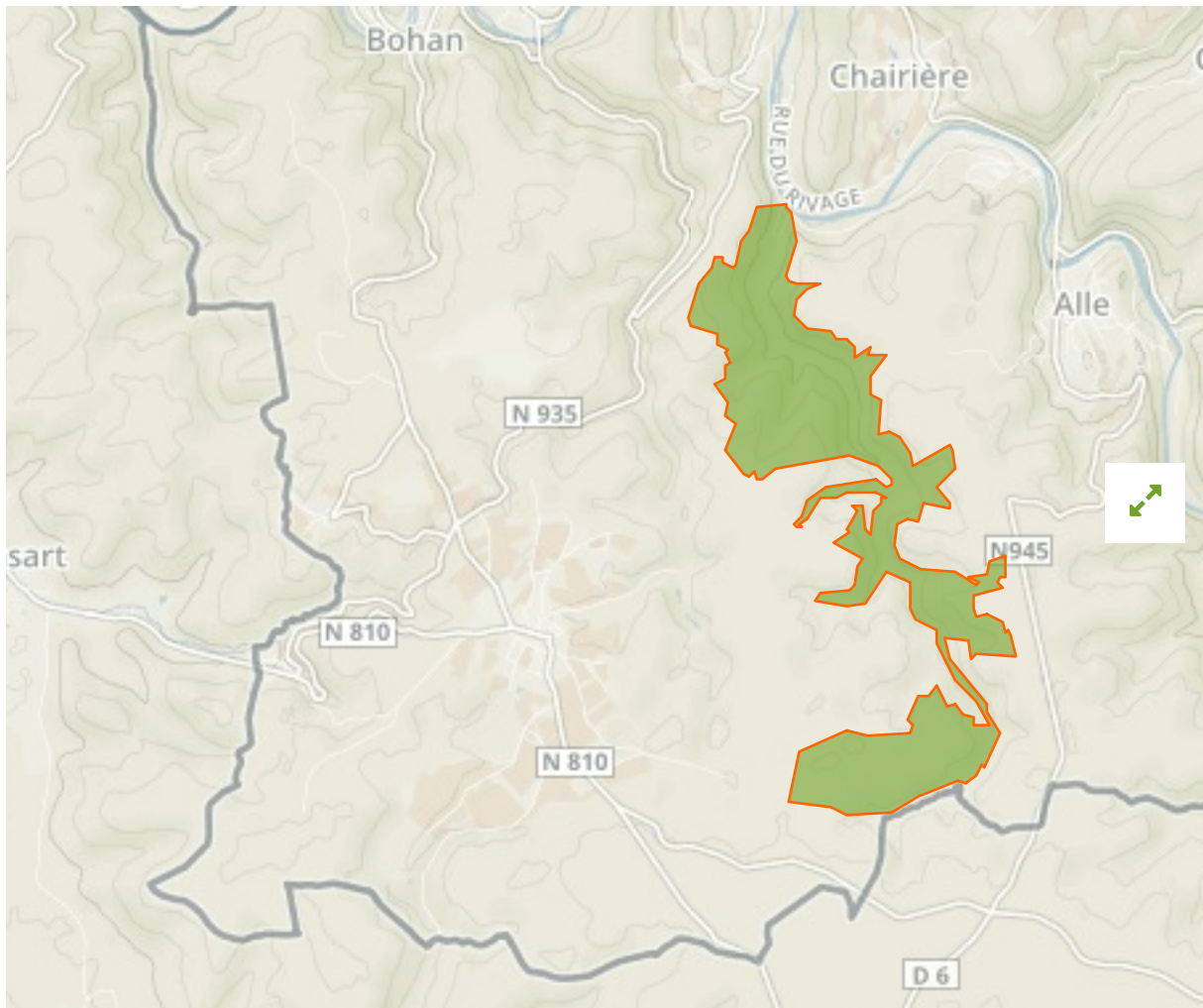


Vallée du Ruisseau de Rebais in Belgium



The designations employed and the presentation of material on this map do not imply the expression of any opinion whatsoever on the part of the Secretariat of the United Nations concerning the legal status of any country, territory, city or area or of its authorities, or concerning the delimitation of its frontiers or boundaries.

WDPA ID

555542207

Reported Area

5.19 km²

Management Effectiveness Evaluations

No information available

Attributes

Original Name Vallée du Ruisseau de Rebais

English Designation Special Protection Area (Birds Directive)

IUCN Management Category Not Reported

Status Designated

Type of Designation Regional

Status Year 2014

Sublocation

Governance Type Federal or national ministry or agency

Management Authority Département de la Nature et des Forêts - DNF

Management Plan Not Reported

International Criteria Not Applicable

Site network breakdown

Transboundary sites

Avesnois

in France



English Designation
Regional Nature Park

IUCN Category
V

WDPA ID	Year of Designation	Reported Area
147523		1182.2 km ²

Trou Aux Feuilles À Erquelinnes

in Belgium



English Designation
Scientific Interest Site (Walloon Region)

IUCN Category
IV

WDPA ID	Year of Designation	Reported Area
333737		0.0 km ²

Bois D'Encade

in France



English Designation

Regional Nature Reserve

IUCN Category

IV

WDPA ID

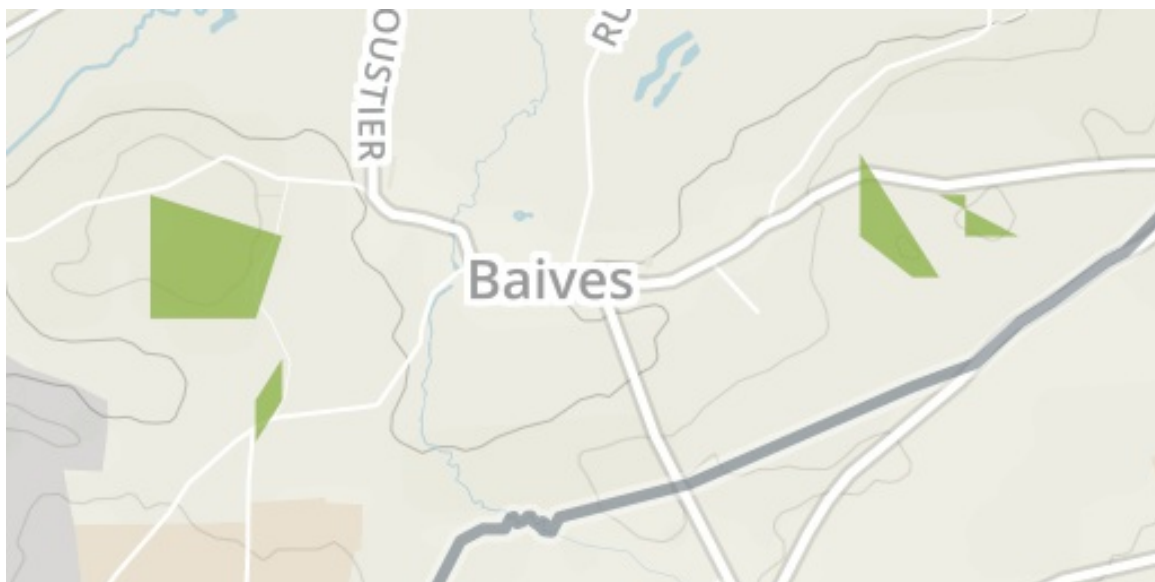
555514386

Year of Designation

0.0 km²

Monts De Baives

in France



English Designation

Regional Nature Reserve

IUCN Category

IV

WDPA ID

555514390

Year of Designation

0.2 km²

Show all