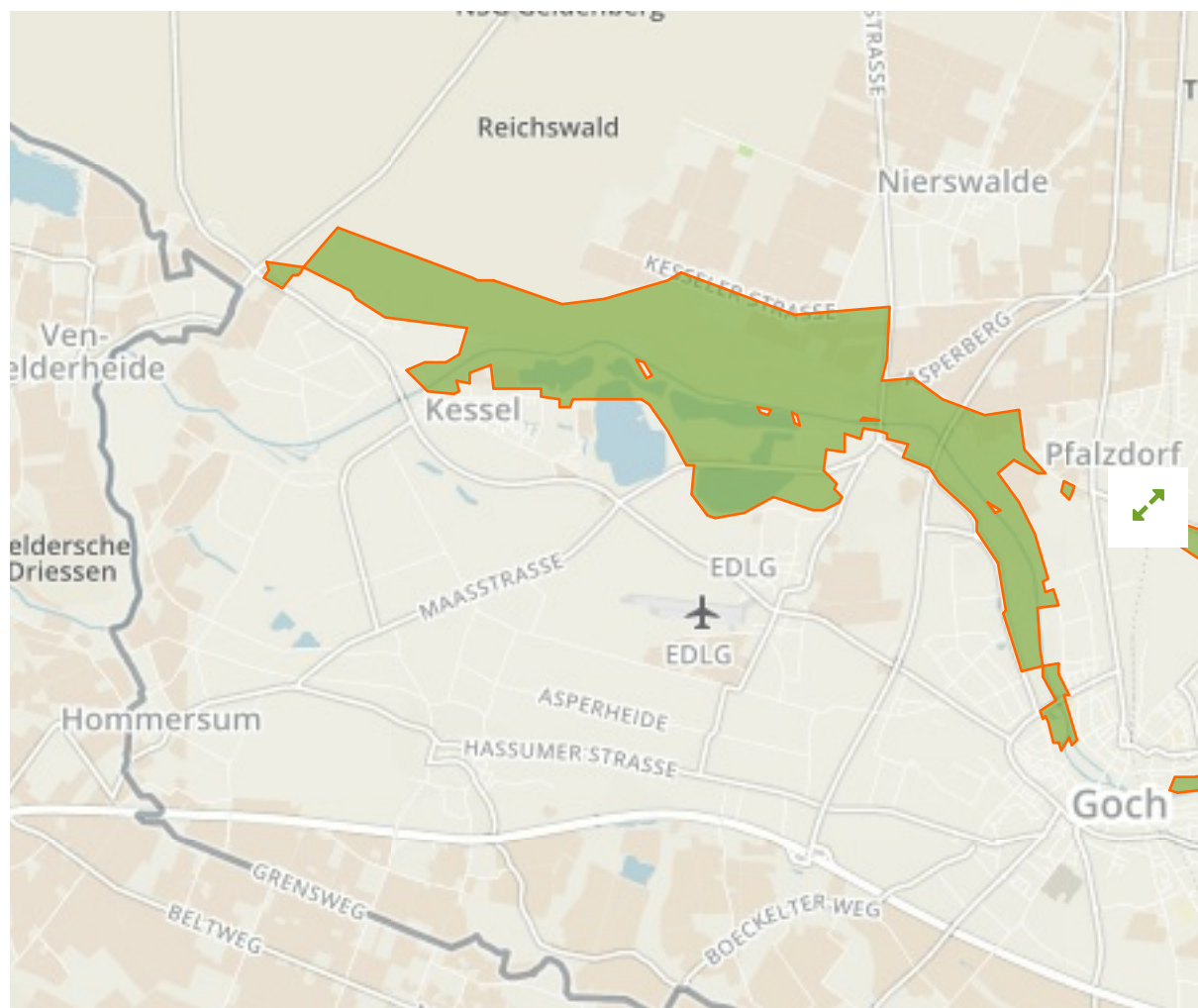


Lsg-Pfalzdorfer Hoehenrand Und Nierstal in

Germany



The designations employed and the presentation of material on this map do not imply the expression of any opinion whatsoever on the part of the Secretariat of the United Nations concerning the legal status of any country, territory, city or area or of its authorities, or concerning the delimitation of its frontiers or boundaries.

WDPA ID

555553400

Reported Area

9.28 km²

European Environment Agency (EEA)

Management Effectiveness Evaluations

No information available

Attributes

Original Name **Lsg-Pfalzdorfer Hoehenrand Und Nierstal**

English Designation **Landscape Protection Area**

IUCN Management Category **V**

Status **Designated**

Type of Designation **National**

Status Year **1982**

Sublocation

Governance Type **Federal or national ministry or agency**

Management Authority **Bundesamt für Naturschutz**

Management Plan **Not Reported**

International Criteria **Not Applicable**

Site network breakdown

Transboundary sites

Nsg Muehlenbruch

in Germany



English Designation

Nature Reserve

IUCN Category

IV

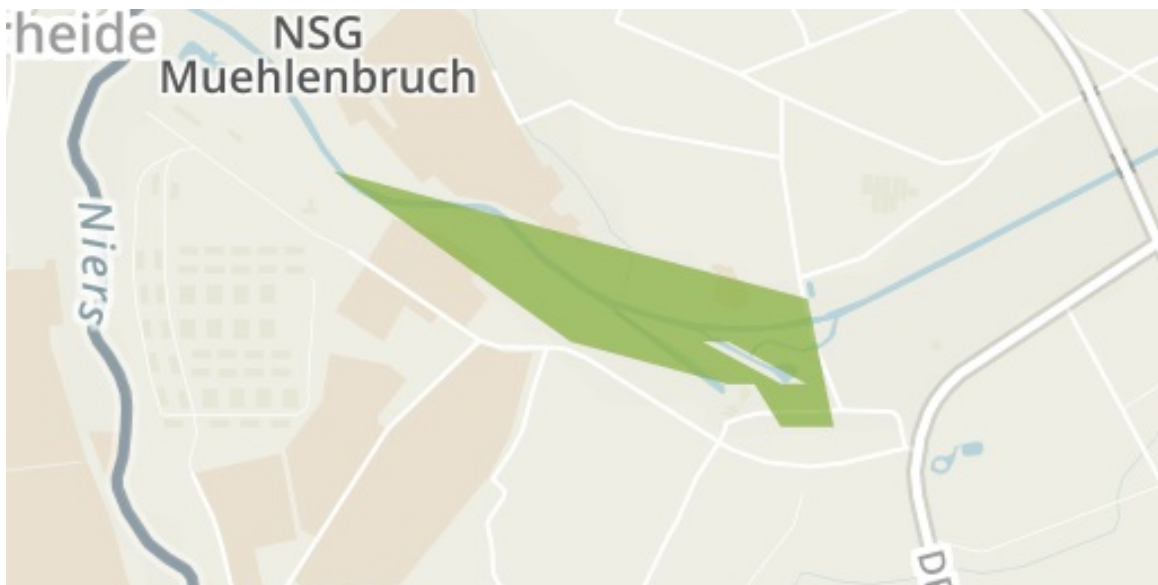
WDPA ID Year of Designation Reported Area

164710

0.2 km²

Lsg-Niersniederung

in Germany



English Designation

Landscape Protection Area

IUCN Category

V

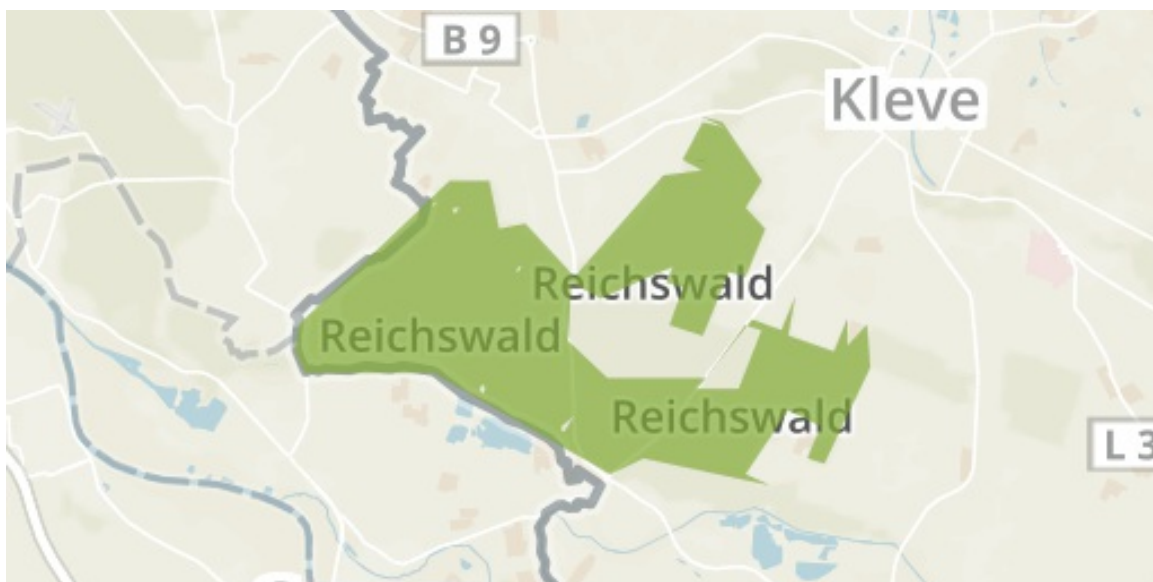
WDPA ID Year of Designation Reported Area

55553403

0.3 km²

Lsg-Waldgebiet Reichswald

in Germany



English Designation

Landscape Protection Area

IUCN Category

V

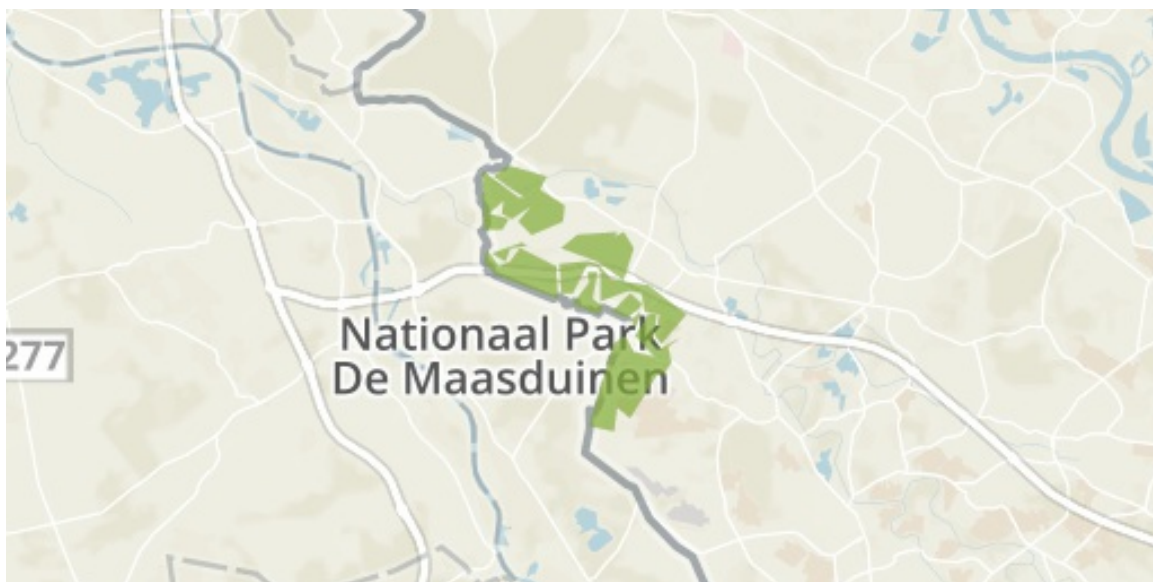
WDPA ID Year of Designation Reported Area

555553569

38.8 km²

Lsg-Kendeldonken, Asperheide, Huelmer Heide, Villersches Feld, Unteres Nierstal, Boentum.

in Germany



English Designation

Landscape Protection Area

IUCN Category

V

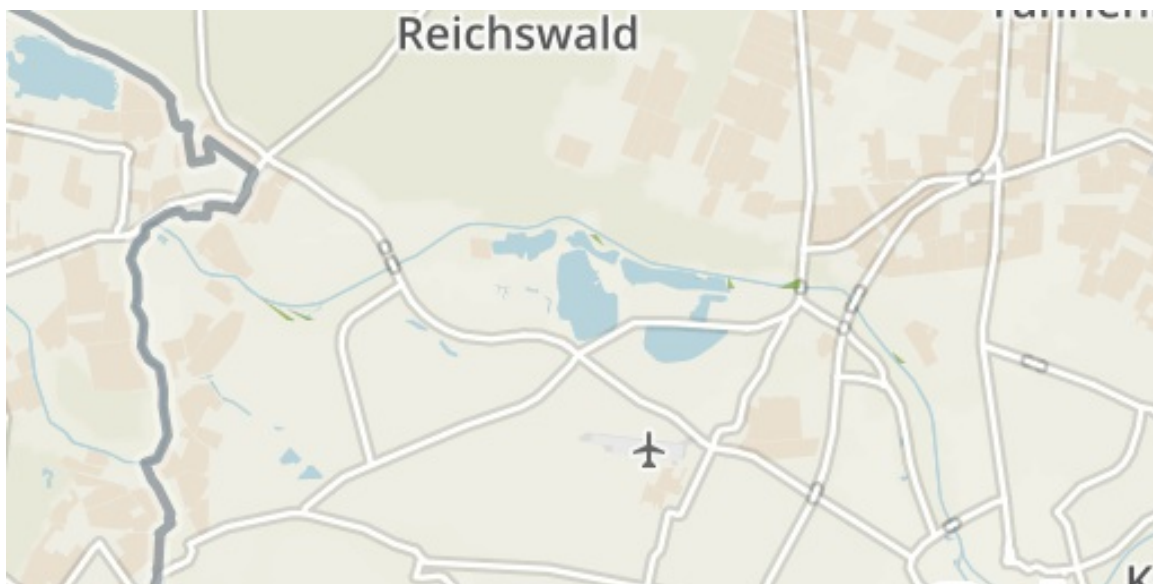
WDPA ID Year of Designation Reported Area

555553571

26.2 km²

Nsg Niersaltarme Und Muehlenteiche

in Germany



English Designation

Nature Reserve

IUCN Category

IV

WDPA ID Year of Designation Reported Area

82251

0.0 km²

Nsg Untere Nuthseen

in Germany



English Designation

Nature Reserve

IUCN Category

IV

WDPA ID Year of Designation Reported Area

82751

0.2 km²

[Show all](#)