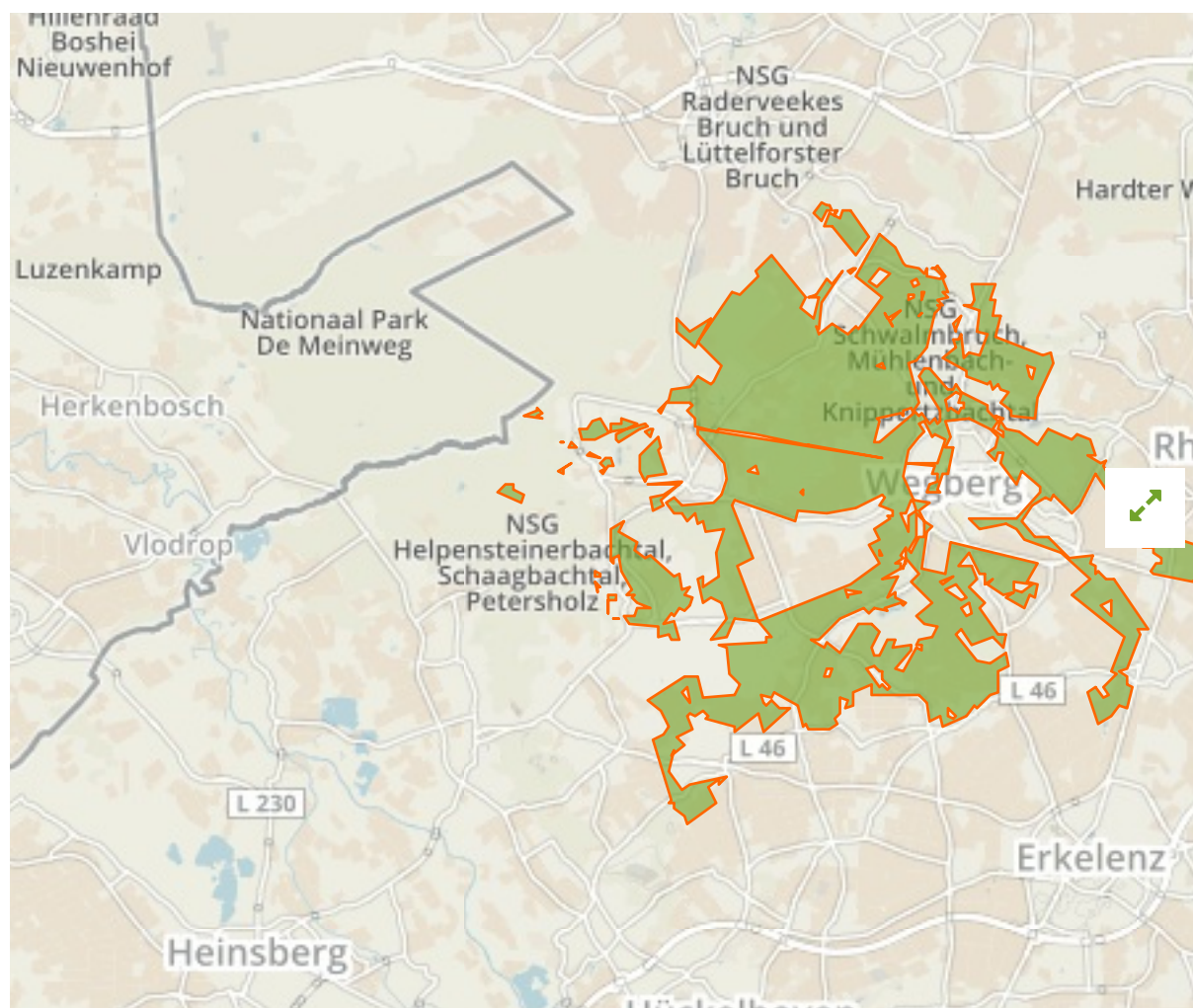


Lsg-Schwalmplatte in Germany



The designations employed and the presentation of material on this map do not imply the expression of any opinion whatsoever on the part of the Secretariat of the United Nations concerning the legal status of any country, territory, city or area or of its authorities, or concerning the delimitation of its frontiers or boundaries.

WDPA ID

555555166

Reported Area

38.42 km²

European Environment Agency (EEA)

Management Effectiveness Evaluations

No information available

Attributes

Original Name **Lsg-Schwalmplatte**

English Designation **Landscape Protection Area**

IUCN Management Category **V**

Status **Designated**

Type of Designation **National**

Status Year **2005**

Sublocation

Governance Type **Federal or national ministry or agency**

Management Authority **Not Reported**

Management Plan **Not Reported**

International Criteria **Not Applicable**

Site network breakdown

Transboundary sites

Nsg Helpensteiner Bachtal, Oberes Schaagbachtal Und Petersholz

in Germany



English Designation

Nature Reserve

IUCN Category

IV

WDPA ID Year of Designation Reported Area

329427

6.9 km²

Nsg Meinweg

in Germany



English Designation

Nature Reserve

IUCN Category

IV

WDPA ID Year of Designation Reported Area

329518

3.5 km²

De Meinweg

in Netherlands



English Designation

National Park

IUCN Category

II

WDPA ID Year of Designation Reported Area

331636

20.6 km²

Meinweg

in Netherlands



English Designation

Nature Conservation Act

IUCN Category

IV

WDPA ID Year of Designation Reported Area

555514248

18.2 km²

Helpensteiner Bachtal-Rothenbach

in Germany



English Designation

Site of Community Importance (Habitats Directive)

IUCN Category

Not Reported

WDPA ID Year of Designation Reported Area

555520140

1.6 km²

Meinweg

in Netherlands



English Designation

Special Protection Area (Birds Directive)

IUCN Category

Not Reported

WDPA ID Year of Designation Reported Area

555542231

18.2 km²

Show all