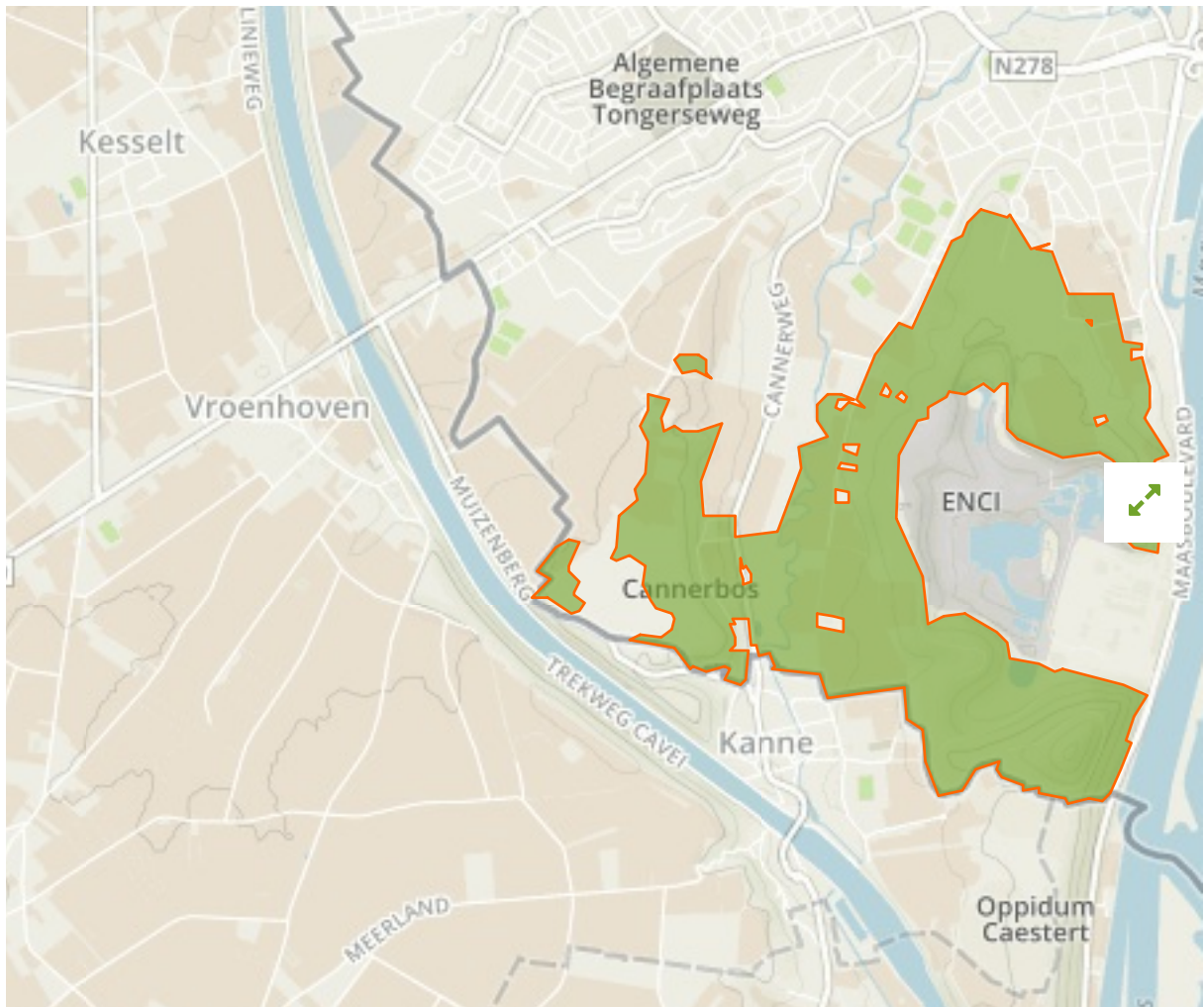


Sint Pietersberg & Jekerdal in Netherlands



The designations employed and the presentation of material on this map do not imply the expression of any opinion whatsoever on the part of the Secretariat of the United Nations concerning the legal status of any country, territory, city or area or of its authorities, or concerning the delimitation of its frontiers or boundaries.

WDPA ID

555559915

Reported Area

2.8 km²

Management Effectiveness Evaluations

No information available

Attributes

Original Name	Sint Pietersberg & Jekerdal
English Designation	Nature Conservation Act
IUCN Management Category	IV
Status	Designated
Type of Designation	National
Status Year	2013
Sublocation	
Governance Type	Federal or national ministry or agency
Management Authority	Ministry EZ RVO/GISCC
Management Plan	Not Reported
International Criteria	Not Applicable

Site network breakdown

Transboundary sites

Het Albertkanaal en Plateau van Caestert

in Belgium

Plateau van Caestert met hellingbossen en mergelgrotten.

in Belgium



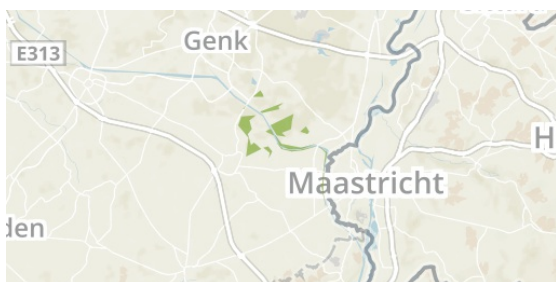
English Designation
Flemish Ecological Network
(Flemish Region)

IUCN Category
Not Assigned

WDPA ID Year of Designation
333193

Reported Area
1.9 km²

Overgang Kempen-Haspengouw
in Belgium



English Designation
Site of Community Importance
(Habitats Directive)

IUCN Category
IV

WDPA ID Year of Designation
555536672

Reported Area
6.9 km²

openbaar bos Limburg
in Belgium



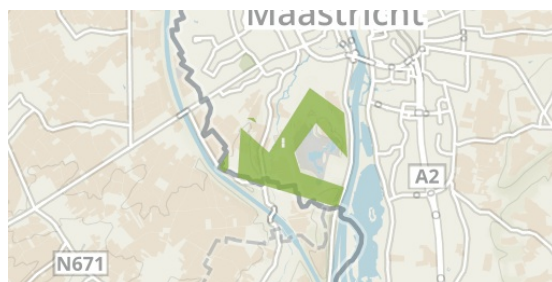
English Designation
Site of Community Importance
(Habitats Directive)

IUCN Category
IV

WDPA ID Year of Designation
555536667

Reported Area
1.3 km²

Sint Pietersberg & Jekerdal
in Netherlands



English Designation
Site of Community Importance
(Habitats Directive)

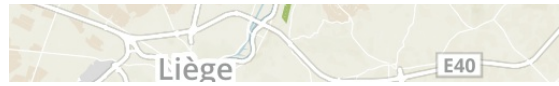
IUCN Category
Not Reported

WDPA ID Year of Designation
555537033

Reported Area
2.6 km²

Basse Meuse et Meuse mitoyenne
in Belgium





English Designation
Public Forest (Flemish Region)

IUCN Category
VI

WDPA ID Year of Designation
555545305

Reported Area
205.7 km²

English Designation
Special Protection Area (Birds
Directive)

IUCN Category
IV

WDPA ID Year of Designation
555623166

Reported Area
2.4 km²

[Show all](#)