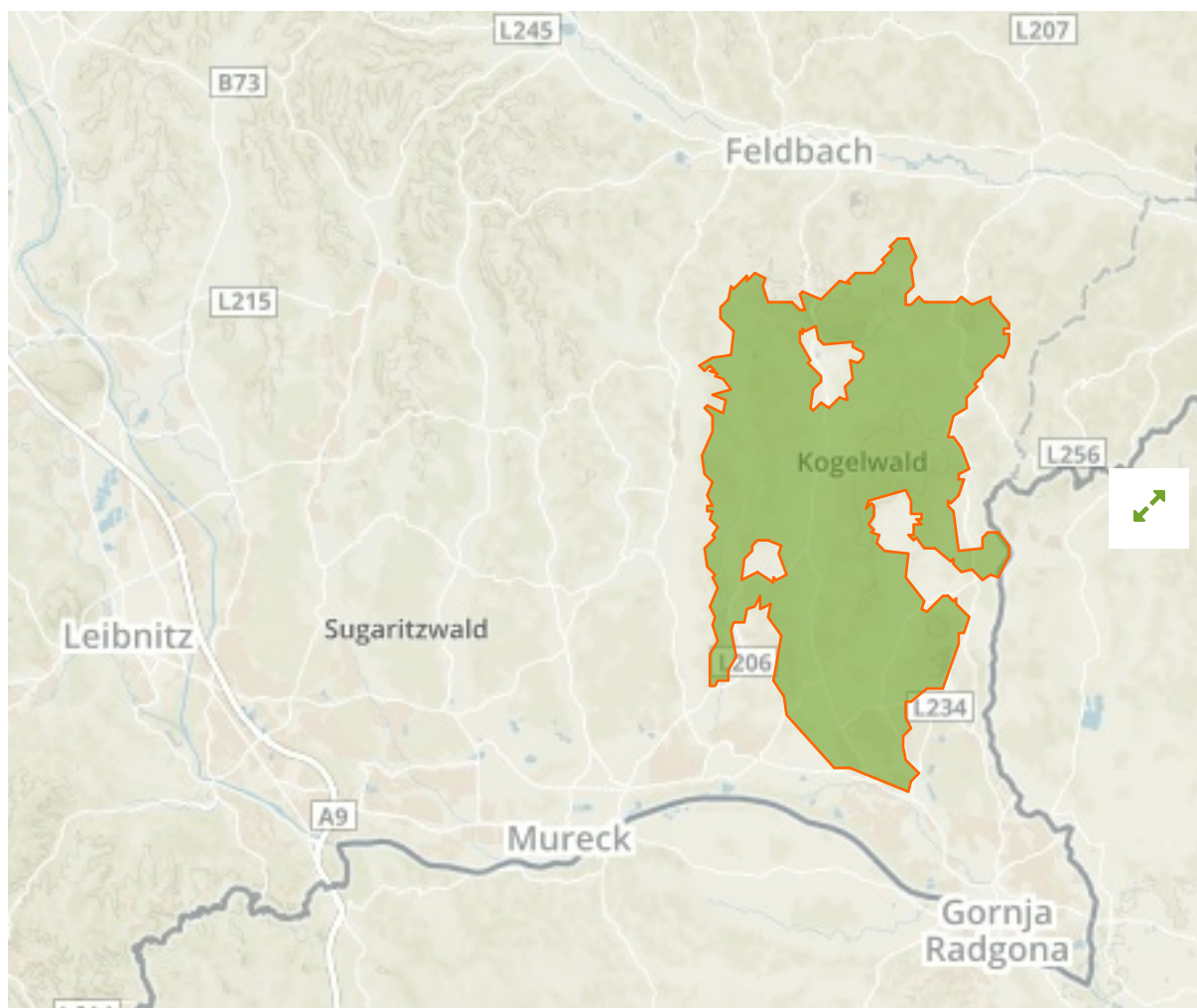


Teile des südoststeirischen Hügellandes inklusive Höll und Grabenlandbäche in **Austria**



The designations employed and the presentation of material on this map do not imply the expression of any opinion whatsoever on the part of the Secretariat of the United Nations concerning the legal status of any country, territory, city or area or of its authorities, or concerning the delimitation of its frontiers or boundaries.

WDPA ID

555577631

Reported Area

156.53 km²

Management Effectiveness Evaluations

No information available

Attributes

Original Name	Teile des südoststeirischen Hügellandes inklusive Höll und Grabenlandbäche
English Designation	Special Protection Area (Birds Directive)
IUCN Management Category	Not Reported
Status	Designated
Type of Designation	Regional
Status Year	1999
Sublocation	
Governance Type	Federal or national ministry or agency
Management Authority	Amt der Steiermärkischen Landesregierung, A 13 Umwelt und Raumordnung, Referat Natur- und allgemeiner Umweltschutz
Management Plan	Not Reported
International Criteria	Not Applicable

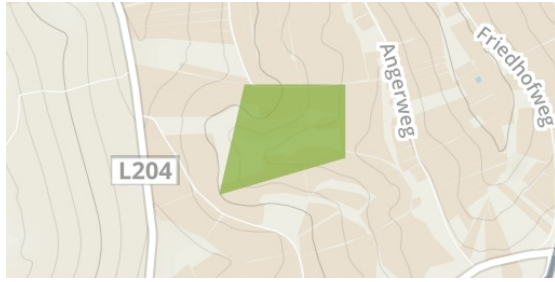
Site network breakdown

Transboundary sites

Tockenwiese In Aigen "Höll"

Murauen (Mureck-Bad Radkersburg-Klöch)

in Austria



English Designation

Nature Reserve

IUCN Category

IV

WDPA ID Year of Designation

103282

Reported Area

0.1 km²

Krajinski Park Goričko

in Slovenia



English Designation

Landscape Park

IUCN Category

V

WDPA ID Year of Designation

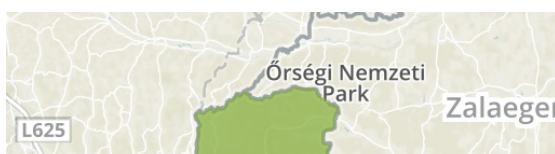
196469

Reported Area

462.7 km²

Goričko

in Slovenia



in Austria



English Designation

Landscape Protection Area

IUCN Category

V

WDPA ID Year of Designation

19198

Reported Area

109.5 km²

Goričko

in Slovenia



English Designation

Ecological Important Area

IUCN Category

Not Reported

WDPA ID Year of Designation

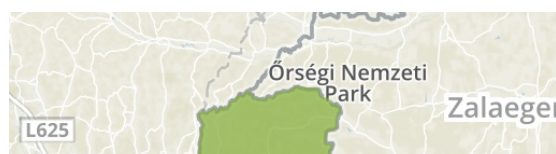
394688

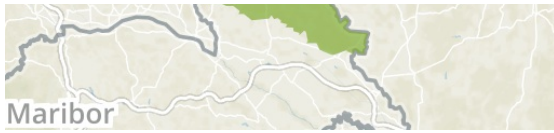
Reported Area

470.1 km²

Goričko

in Slovenia



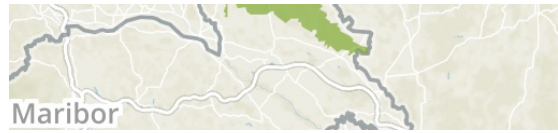


English Designation
Specialy Protected Area

IUCN Category
Not Reported

WDPA ID **Year of Designation**
395164

Reported Area
448.2 km²



English Designation
Specialy Protected Area

IUCN Category
Not Reported

WDPA ID **Year of Designation**
395231

Reported Area
402.0 km²

[Show all](#)