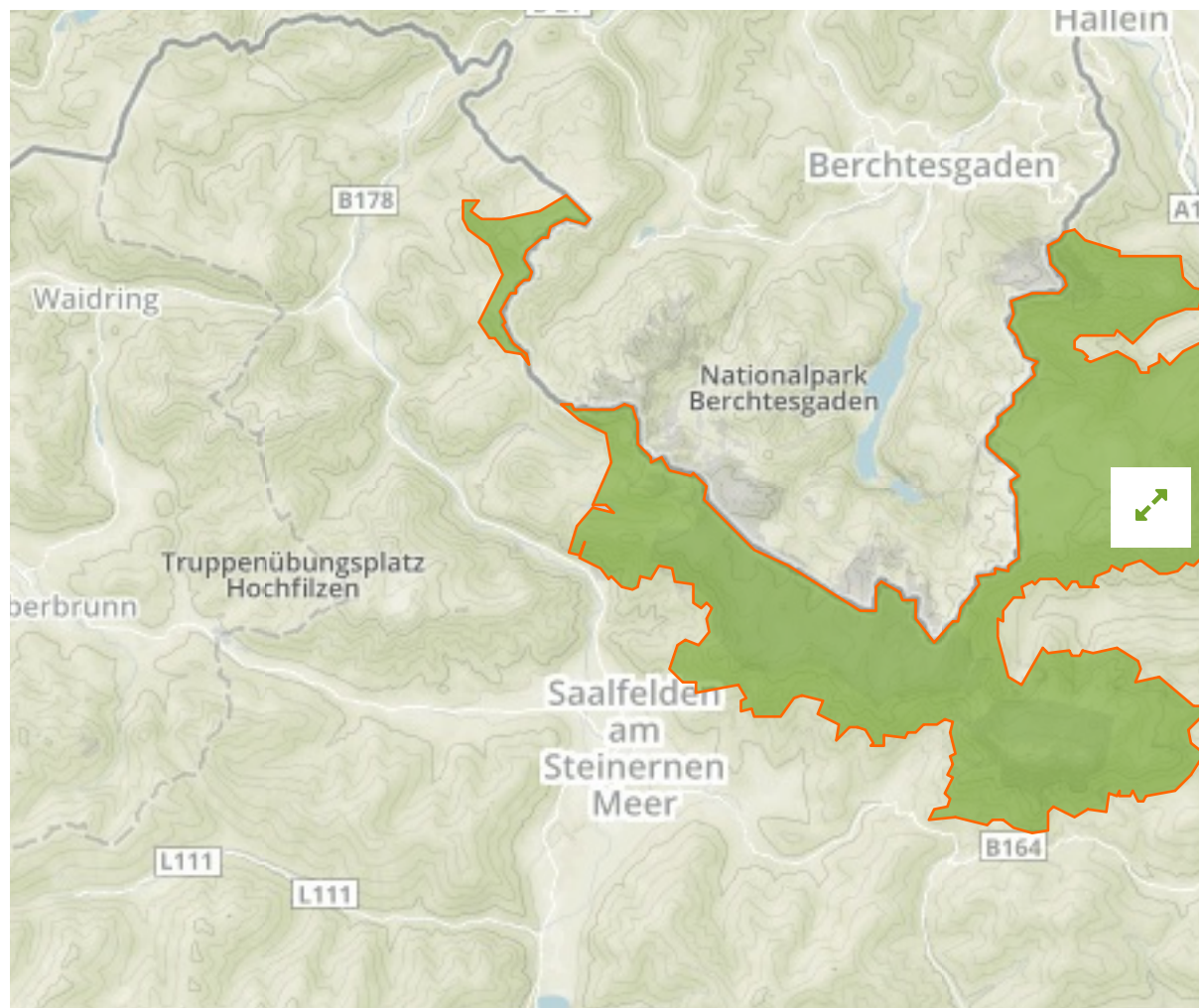


Kalkhochalpen, Salzburg in Austria



The designations employed and the presentation of material on this map do not imply the expression of any opinion whatsoever on the part of the Secretariat of the United Nations concerning the legal status of any country, territory, city or area or of its authorities, or concerning the delimitation of its frontiers or boundaries.

WDPA ID

555578005

Reported Area

237.25 km²

Management Effectiveness Evaluations

No information available

Attributes

Original Name **Kalkhochalpen, Salzburg**

English Designation **Site of Community Importance (Habitats Directive)**

IUCN Management Category **Not Reported**

Status **Designated**

Type of Designation **Regional**

Status Year **2006**

Sublocation

Governance Type **Federal or national ministry or agency**

Management Authority **Natur- und Umweltschutzabteilung des Amtes der Salzburger Landesregierung in Zusammenarbeit mit Grundbesitzern**

Management Plan **Not Reported**

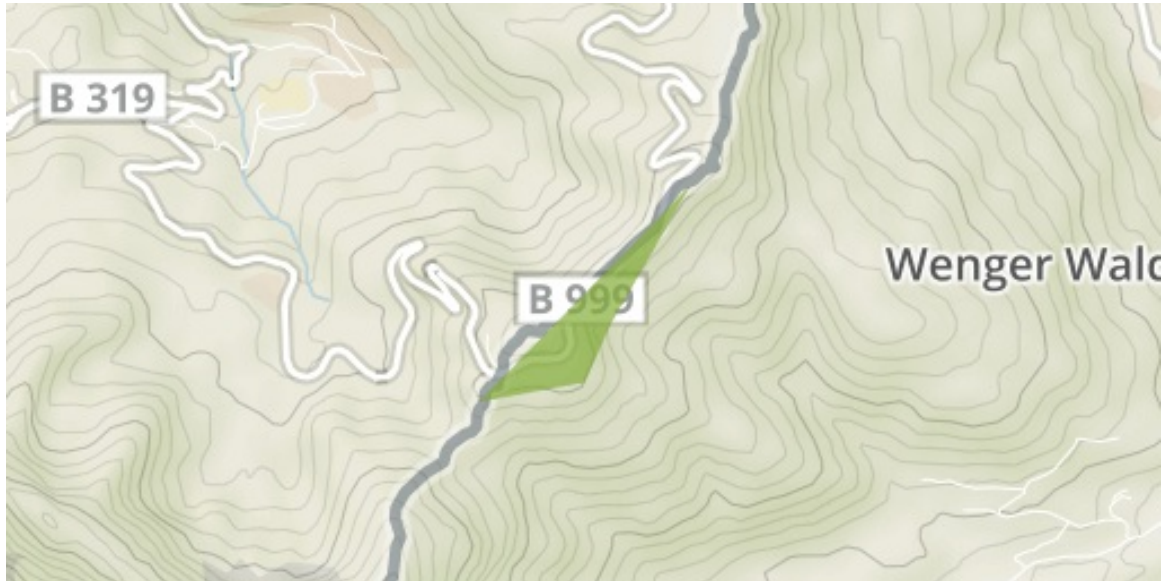
International Criteria **Not Applicable**

Site network breakdown

Transboundary sites

Roßfeldstraße

in Austria



English Designation

Landscape Protection Area

IUCN Category

V

WDPA ID Year of Designation Reported Area

102687

0.4 km²

Kalkhochalpen

in Austria



English Designation

Nature Reserve

IUCN Category

IV

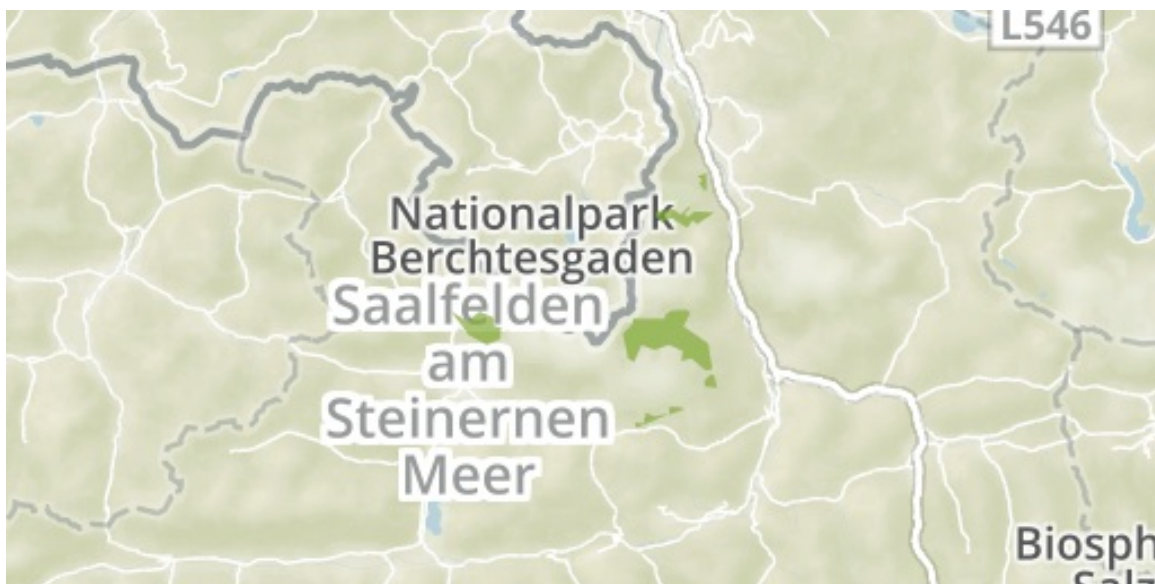
WDPA ID Year of Designation Reported Area

31402

237.0 km²

Göll-Hagen-Hochkönig-Stein.Meer

in Austria



English Designation

Landscape Protection Area

IUCN Category

V

WDPA ID Year of Designation Reported Area

19166

36.8 km²

Nationalpark Berchtesgaden

in Germany



English Designation

Special Protection Area (Birds Directive)

IUCN Category

Not Reported

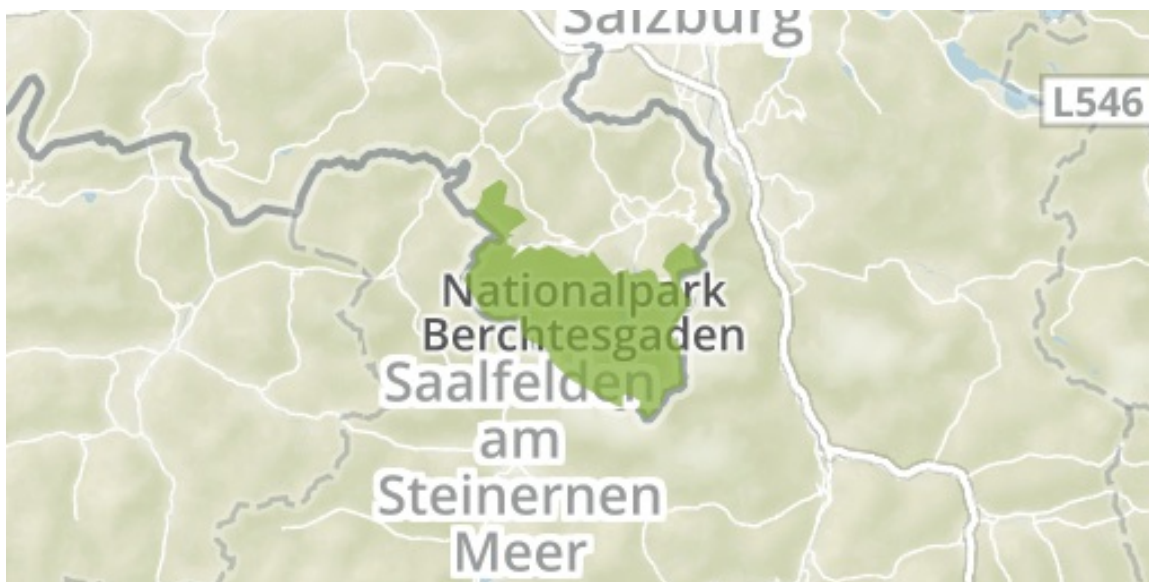
WDPA ID Year of Designation Reported Area

555537970

213.4 km²

Nationalpark Berchtesgaden

in Germany



English Designation

Site of Community Importance (Habitats Directive)

IUCN Category

Not Reported

WDPA ID

555579401

Year of Designation

213.4 km²

Reported Area

Berchtesgaden

in Germany



English Designation

National Park

IUCN Category

II

WDPA ID

668

Year of Designation

208.0 km²

Reported Area

[Show all](#)