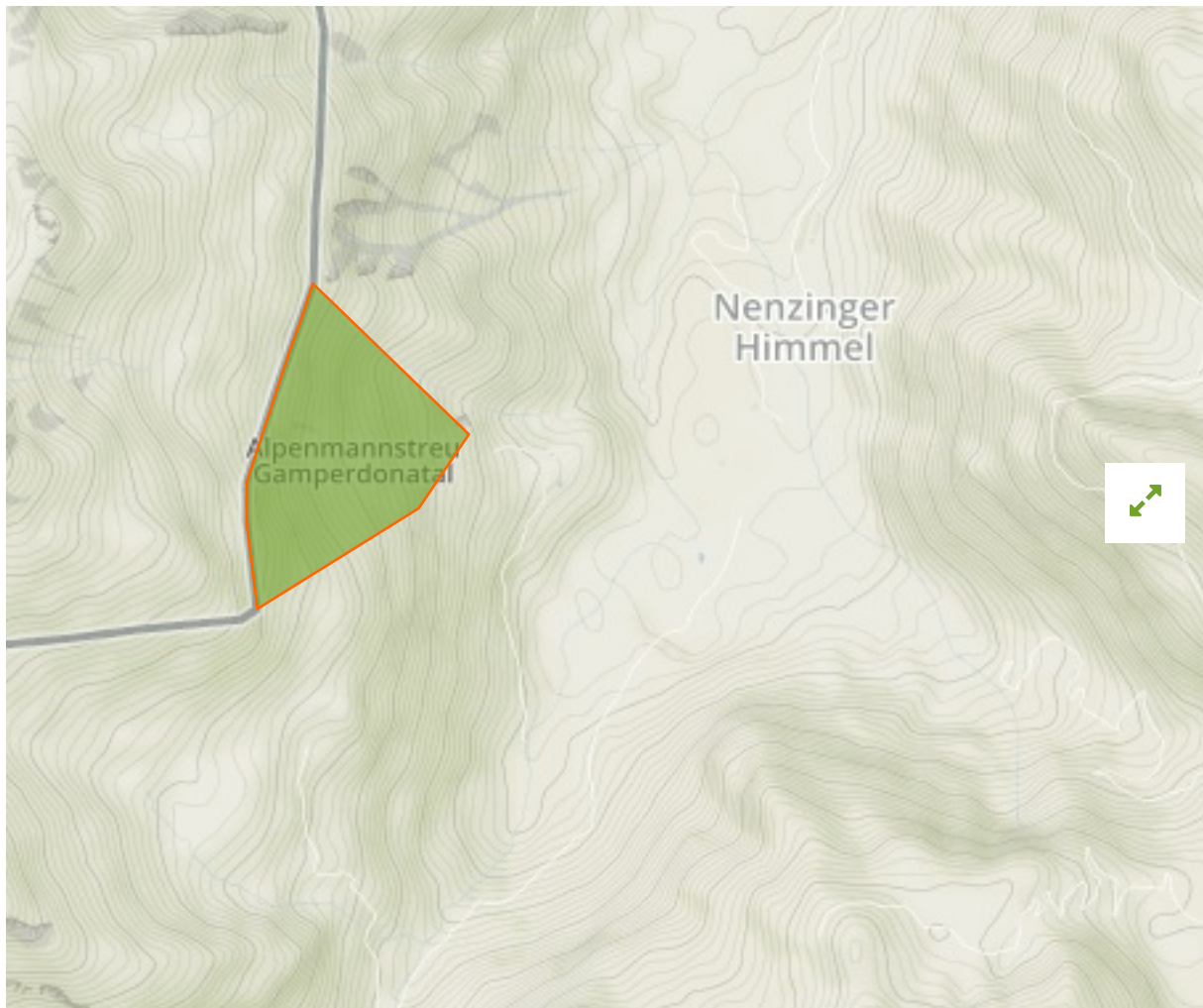


Alpenmannstreu Gamperdonatal in Austria



The designations employed and the presentation of material on this map do not imply the expression of any opinion whatsoever on the part of the Secretariat of the United Nations concerning the legal status of any country, territory, city or area or of its authorities, or concerning the delimitation of its frontiers or boundaries.

WDPA ID

555578038

Reported Area

0.38 km²

Management Effectiveness Evaluations

No information available

Attributes

Original Name **Alpenmannstreu Gamperdonatal**

English Designation **Site of Community Importance (Habitats Directive)**

IUCN Management Category **Not Reported**

Status **Designated**

Type of Designation **Regional**

Status Year **2003**

Sublocation

Governance Type **Federal or national ministry or agency**

Management Authority **Amt der Vorarlberger Landesregierung, Abt. IVe – Umwelt- und Klimaschutz**

Management Plan **Not Reported**

International Criteria **Not Applicable**

Site network breakdown

Transboundary sites

Nenzinger Himmel

in Austria



English Designation
Flora Protection Area

IUCN Category
IV

WDPA ID	Year of Designation	Reported Area
169590		10.7 km ²

Pflanzenschutzgebiet (Gebirgsflora)

in Liechtenstein



English Designation
Protected Area

IUCN Category
V

WDPA ID	Year of Designation	Reported Area
30757		62.5 km ²

Garsälli/Zegerberg

in Liechtenstein



English Designation

Forest Reserve

IUCN Category

Ib

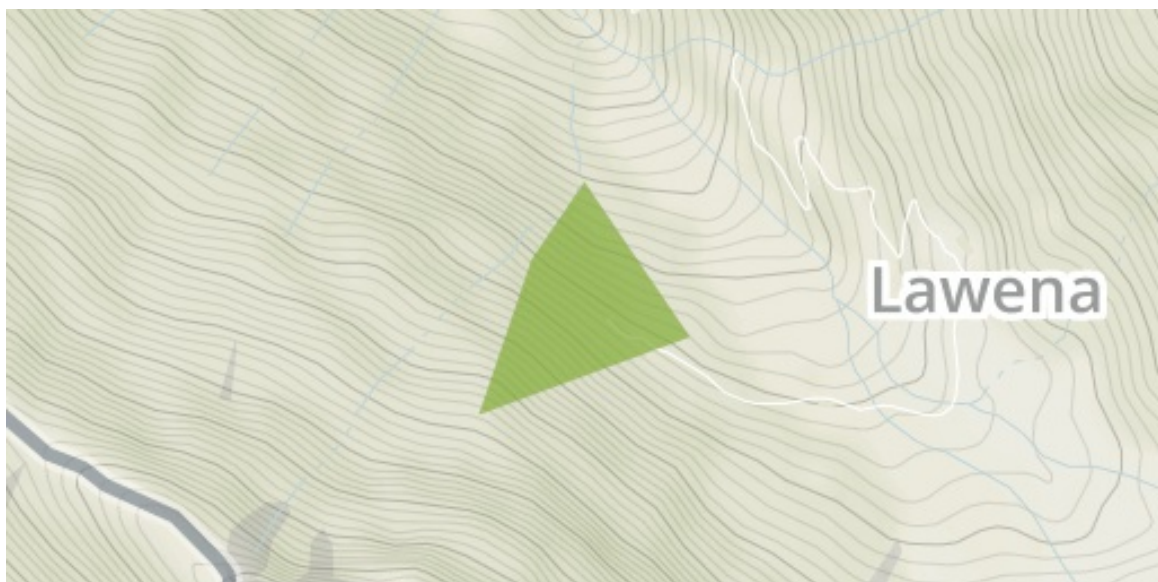
WDPA ID Year of Designation Reported Area

326426

1.9 km²

Messweid

in Liechtenstein



English Designation

Forest Reserve

IUCN Category

Ib

WDPA ID Year of Designation Reported Area

326428

0.1 km²

Mittagsspitze

in Liechtenstein



English Designation

Forest Reserve

IUCN Category

Ib

WDPA ID Year of Designation Reported Area

326429

1.2 km²

Schlosswald

in Liechtenstein



English Designation

Forest Reserve

IUCN Category

Ib

WDPA ID Year of Designation Reported Area

326431

0.2 km²

Show all