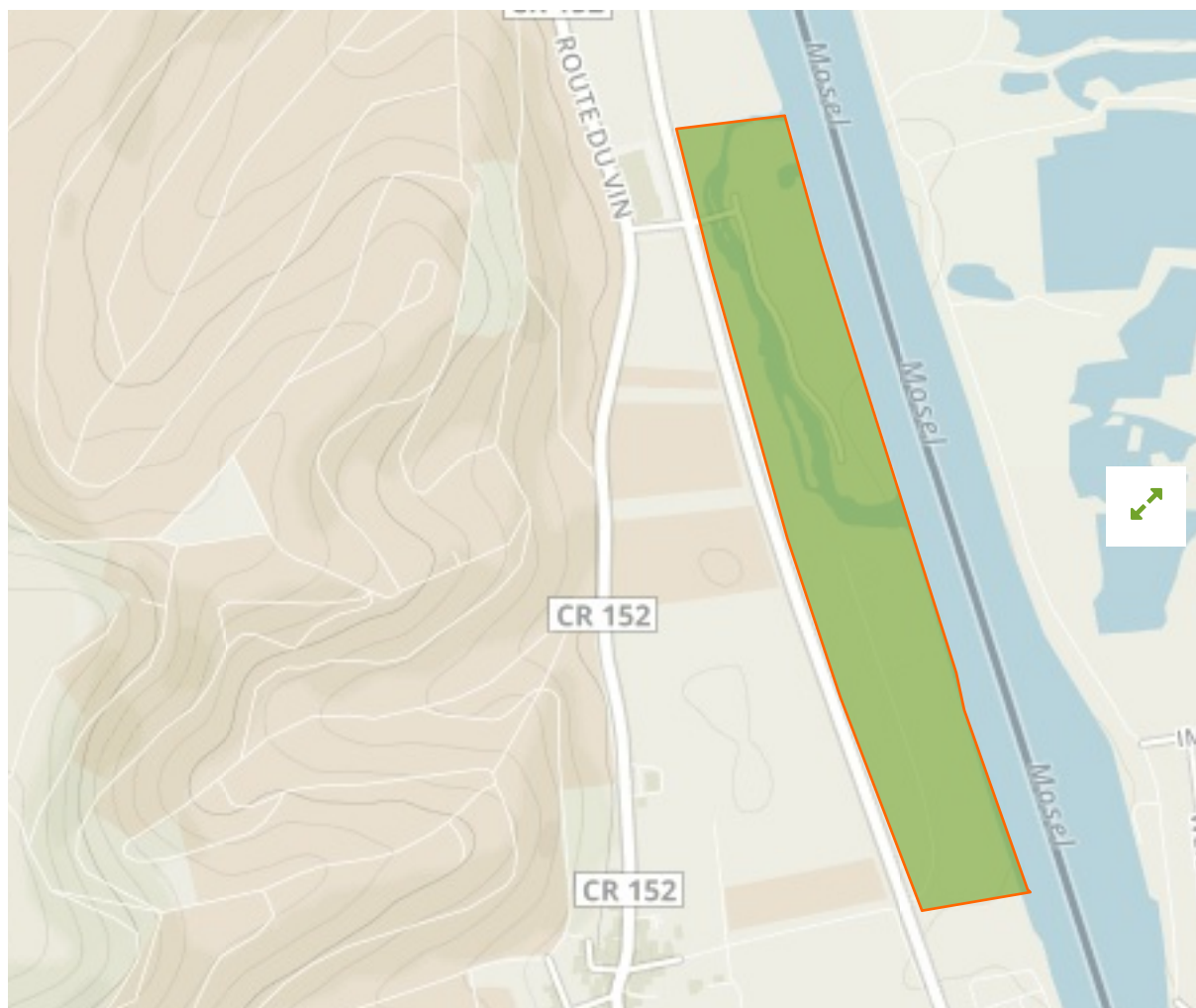


## Haff Réimech - Taupeschwues in Luxembourg



The designations employed and the presentation of material on this map do not imply the expression of any opinion whatsoever on the part of the Secretariat of the United Nations concerning the legal status of any country, territory, city or area or of its authorities, or concerning the delimitation of its frontiers or boundaries.

WDPA ID

---

**5813**

Reported Area

---

**0.13 km<sup>2</sup>**

European Environment Agency (EEA)

## Management Effectiveness Evaluations

---

No information available

## Attributes

---

**Original Name** **Haff Réimech - Taupeschwues**

**English Designation** **Protected Area**

**IUCN Management Category** **Ib**

Status **Designated**

Type of Designation **National**

Status Year **1998**

Sublocation

Governance Type **Federal or national ministry or agency**

Management Authority **Not Reported**

Management Plan **Not Reported**

International Criteria **Not Applicable**

## Site network breakdown

---

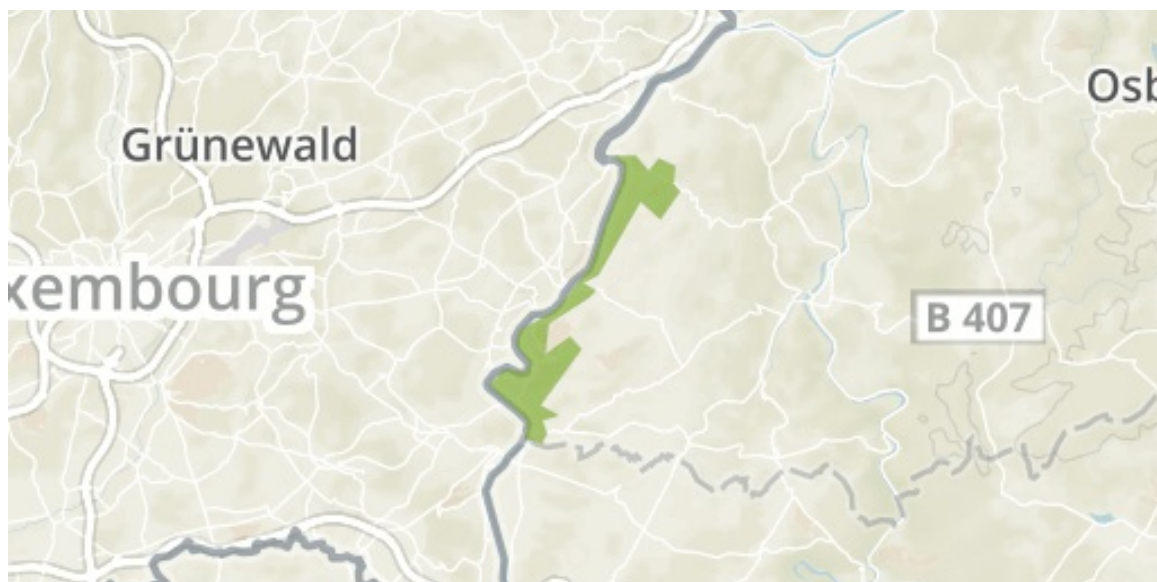
### Transboundary sites

---



## Obermoseltal

in Germany



English Designation

Landscape Protection Area

IUCN Category

Not Assigned

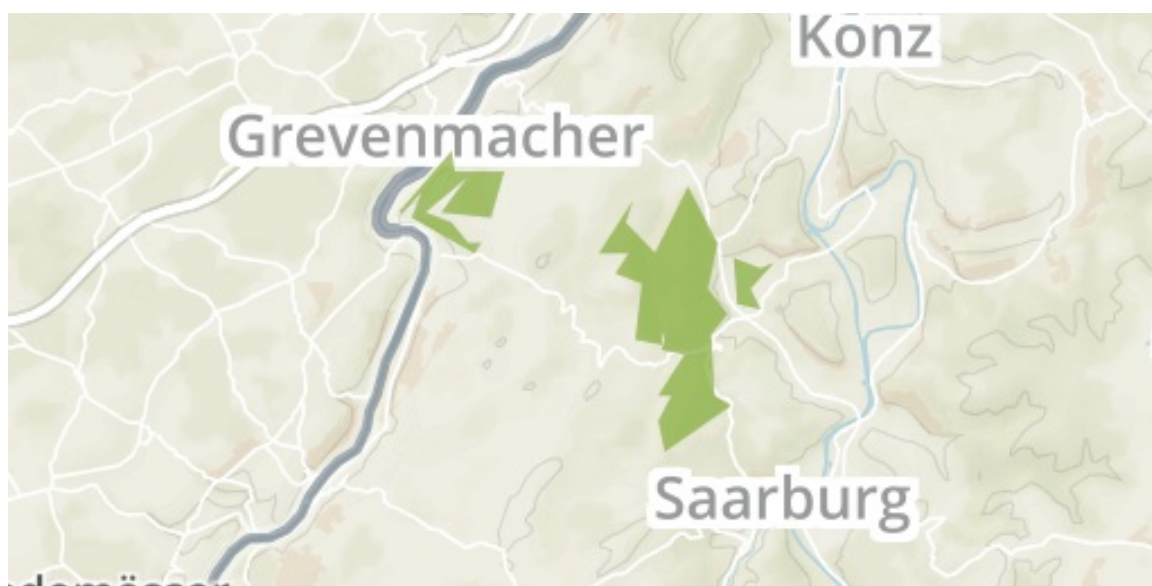
WDPA ID      Year of Designation      Reported Area

323414

17.9 km<sup>2</sup>

**Nitteler Fels und Nitteler Wald**

in Germany



English Designation

Site of Community Importance (Habitats Directive)

IUCN Category

Not Reported

WDPA ID      Year of Designation      Reported Area

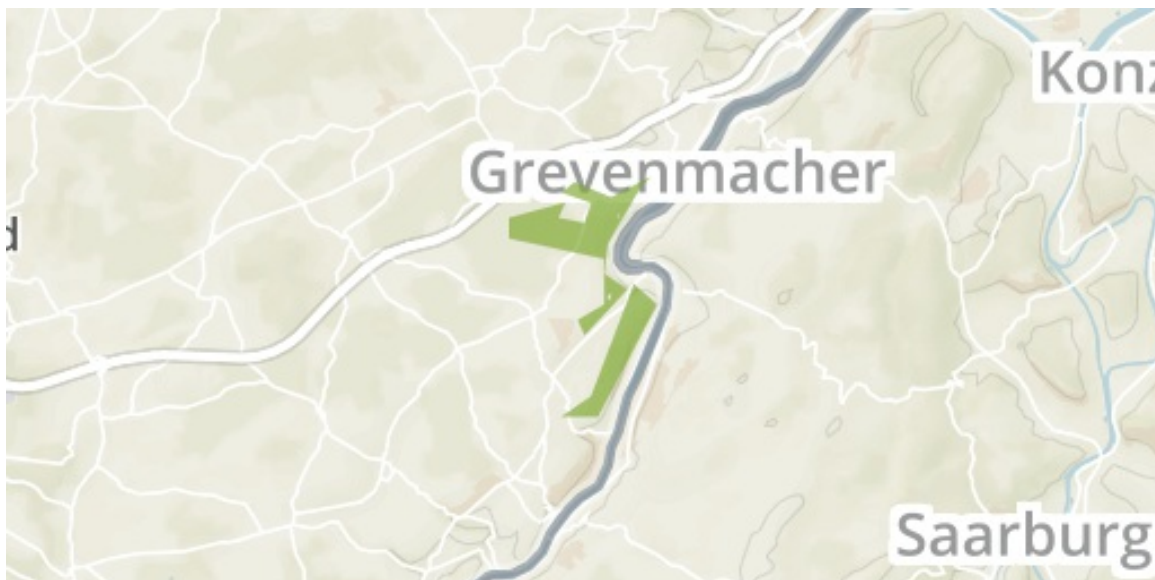
55521431

10.1 km<sup>2</sup>



## Machtum - Pellembierg / Froumbierg / Greivenmaacherbiereg

in Luxembourg



English Designation

Zsc - Natura 2000

IUCN Category

IV

WDPA ID      Year of Designation      Reported Area

337494

4.0 km<sup>2</sup>

**Machtum - Pellembierg / Froumbierg / Greivenmaacherbiereg**

in Luxembourg



English Designation

Site of Community Importance (Habitats Directive)

IUCN Category

Not Reported

WDPA ID      Year of Designation      Reported Area

555536888

4.0 km<sup>2</sup>

[Show all](#)