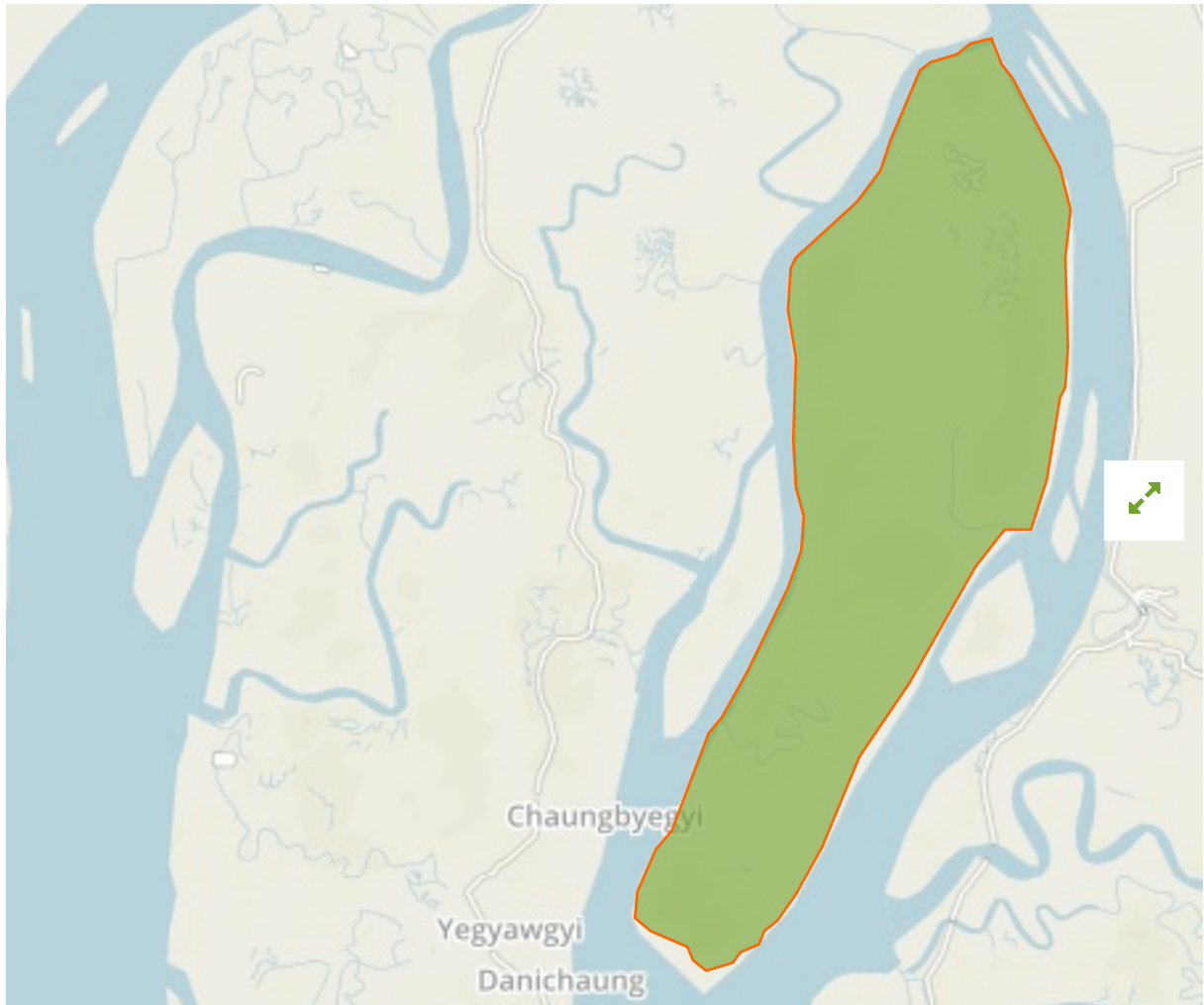


Meinmahla Kyun Wildlife Sanctuary in Myanmar



The designations employed and the presentation of material on this map do not imply the expression of any opinion whatsoever on the part of the Secretariat of the United Nations concerning the legal status of any country, territory, city or area or of its authorities, or concerning the delimitation of its frontiers or boundaries.

WDPA ID

8033

Reported Area

136.69 km²

Management Effectiveness Evaluations

Asean MEE [2012](#)

Attributes

Original Name [Meinmahla Kyun Wildlife Sanctuary](#)

English Designation [Wildlife Sanctuary and ASEAN Heritage Park](#)

IUCN Management Category [IV](#)

Status [Designated](#)

Type of Designation [National](#)

Status Year [1993](#)

Sublocation [MM-07](#)

Governance Type [Federal or national ministry or agency](#)

Management Authority [Forest Department](#)

Management Plan [Endorsed, Being implemented](#)

International Criteria [Not Applicable](#)