

Lesotho, Africa

Number of Protected areas

4

↓ 2

with management effectiveness evaluations

Polygons/Points ratio



75%

Polygons

25%

Points

Number of sources

For International designations	2
For National designations	1
TOTAL	3

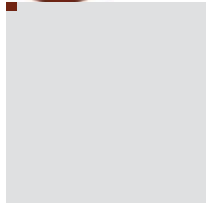
Governance types

Name	Governance type	Count	%
Federal or national ministry or agency		3	75.0
Not Reported		1	25.0

Protected areas coverage [\(Ref 1 ↓\)](#)



Area terrestrial



0.26%

coverage

80 km²

Land Area Protected

30,495 km²

Total Land Area

↓ **0.35%**

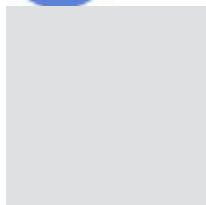
with management effectiveness evaluation

106.28689 km²

Area Assessed



Area marine



0.0%

coverage

0 km²

Marine Area Protected

0 km²

Total Marine Area

↓ 0.0%

with management effectiveness evaluation

0.0 km²

Area Assessed

Warning: These statistics might differ from those reported officially by countries due to difference in methodologies and datasets used to assess protected area coverage and differences in the base maps used to measure terrestrial and marine area of a country or territory.

1 National designations

Categories	Count
National Park	2

0 Regional designations

2 International designations

Categories	Count
World Heritage Site (natural or mixed)	1
Ramsar Site, Wetland of International Importance	1

Citation

UNEP-WCMC (2019). Protected Area Country Profile for Lesotho from the World Database of Protected Areas, November 2019. Available at: www.protectedplanet.net

References

(Ref 1) UNEP-WCMC (2016). Global statistics from the World Database on Protected Areas (WDPA). Cambridge, UK: UNEP-WCMC.

(Ref 2) Coad, L. et al. (2015). Measuring impact of protected area management interventions: current and future use of the Global Database of Protected Area Management Effectiveness. *Phil. Trans. R. Soc. B* 370: 20140281.

[↗ External link](#)